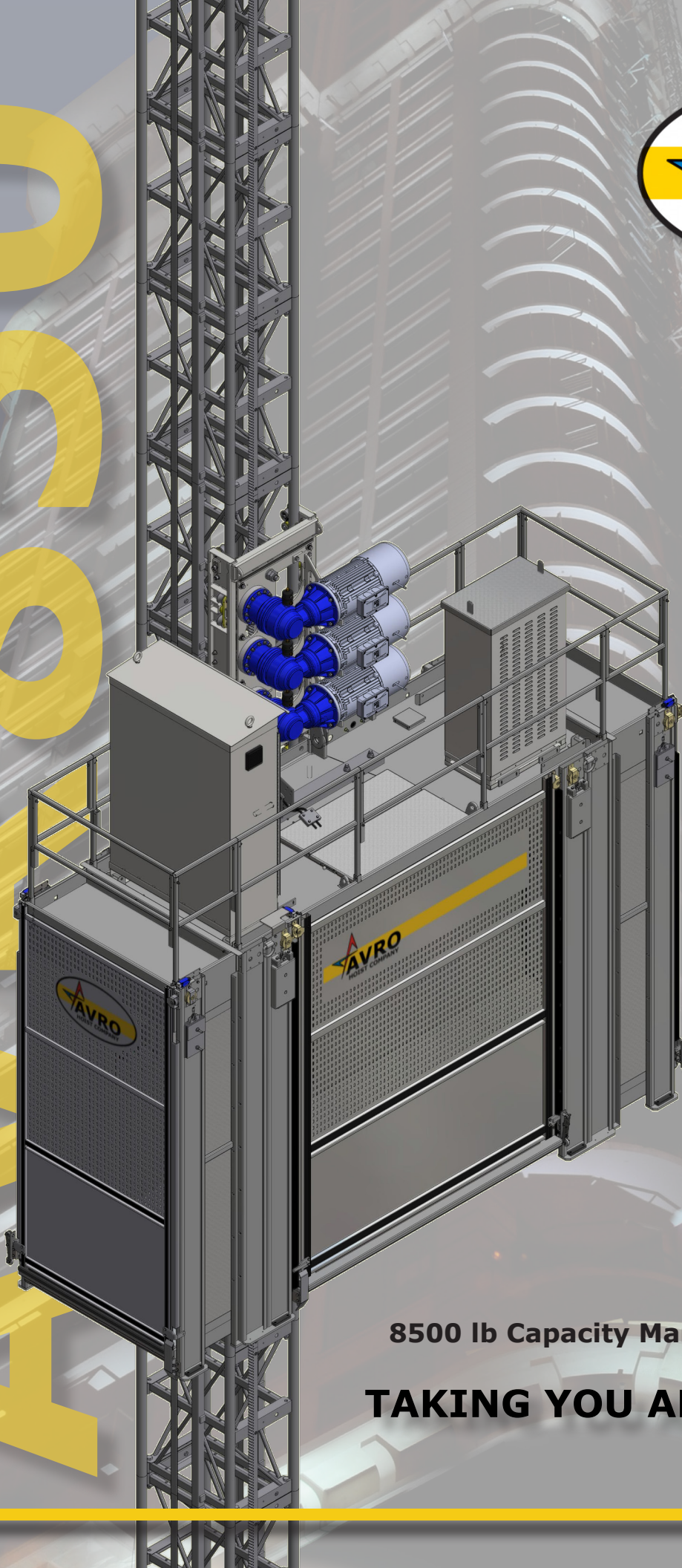


AVRO

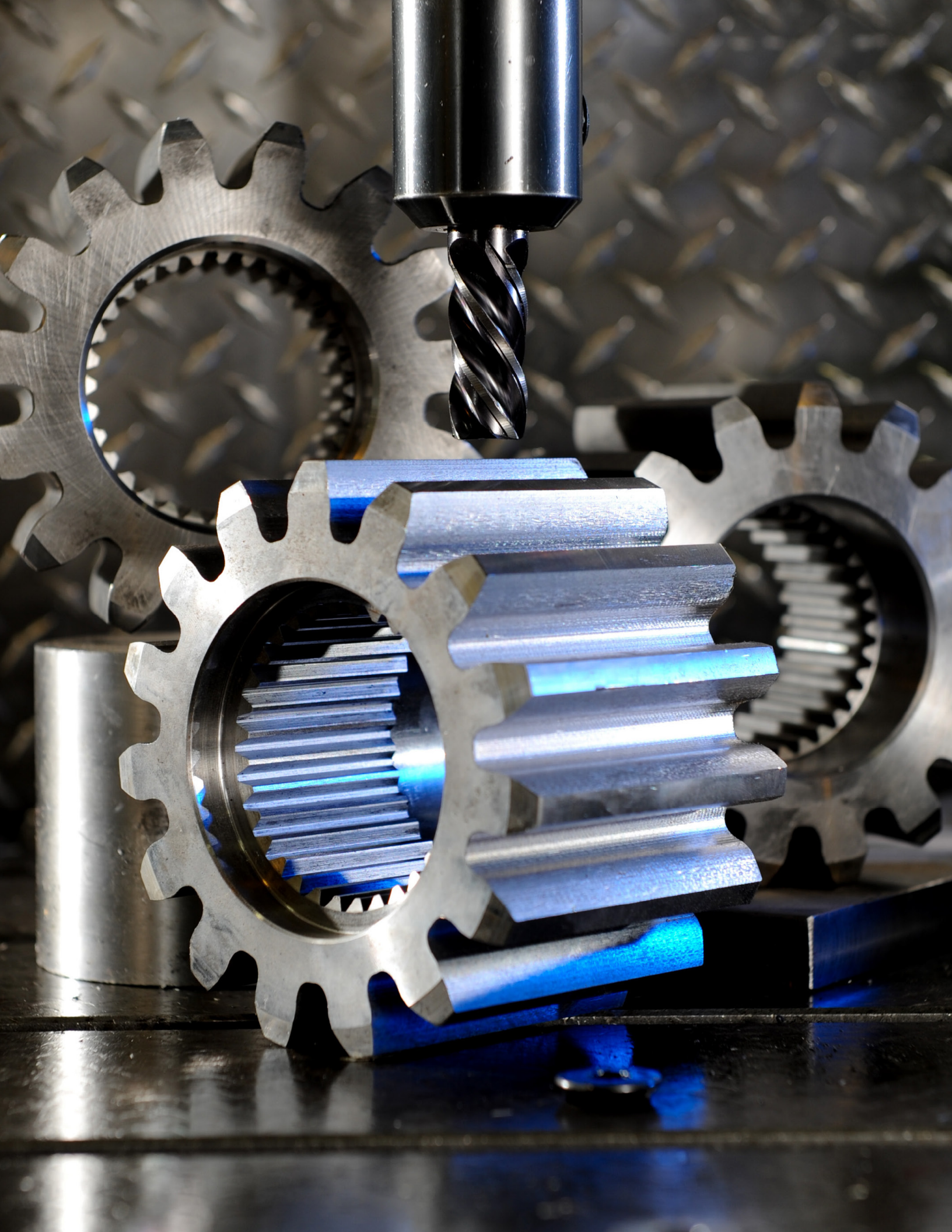


8500 lb Capacity Man And Material Hoist

**TAKING YOU ABOVE THE REST!**









Power Cable Hangers

Power Cable Guides

Drive Motors

Resistors

Power Cable

Counterweight  
(Some Models)

Cathead (Some Models)

Jump Pole

650mm X 900mm  
Mast Section

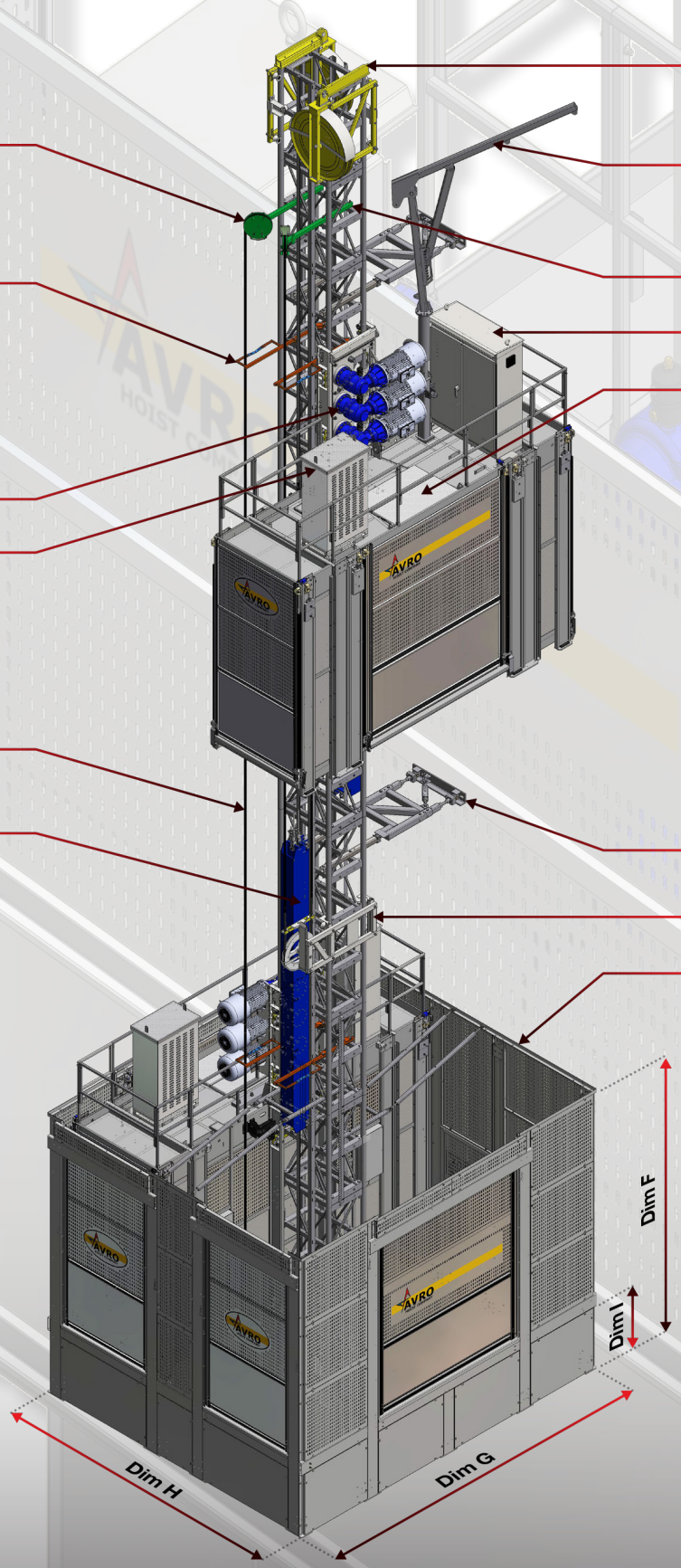
Electrical Panel

Working Platform

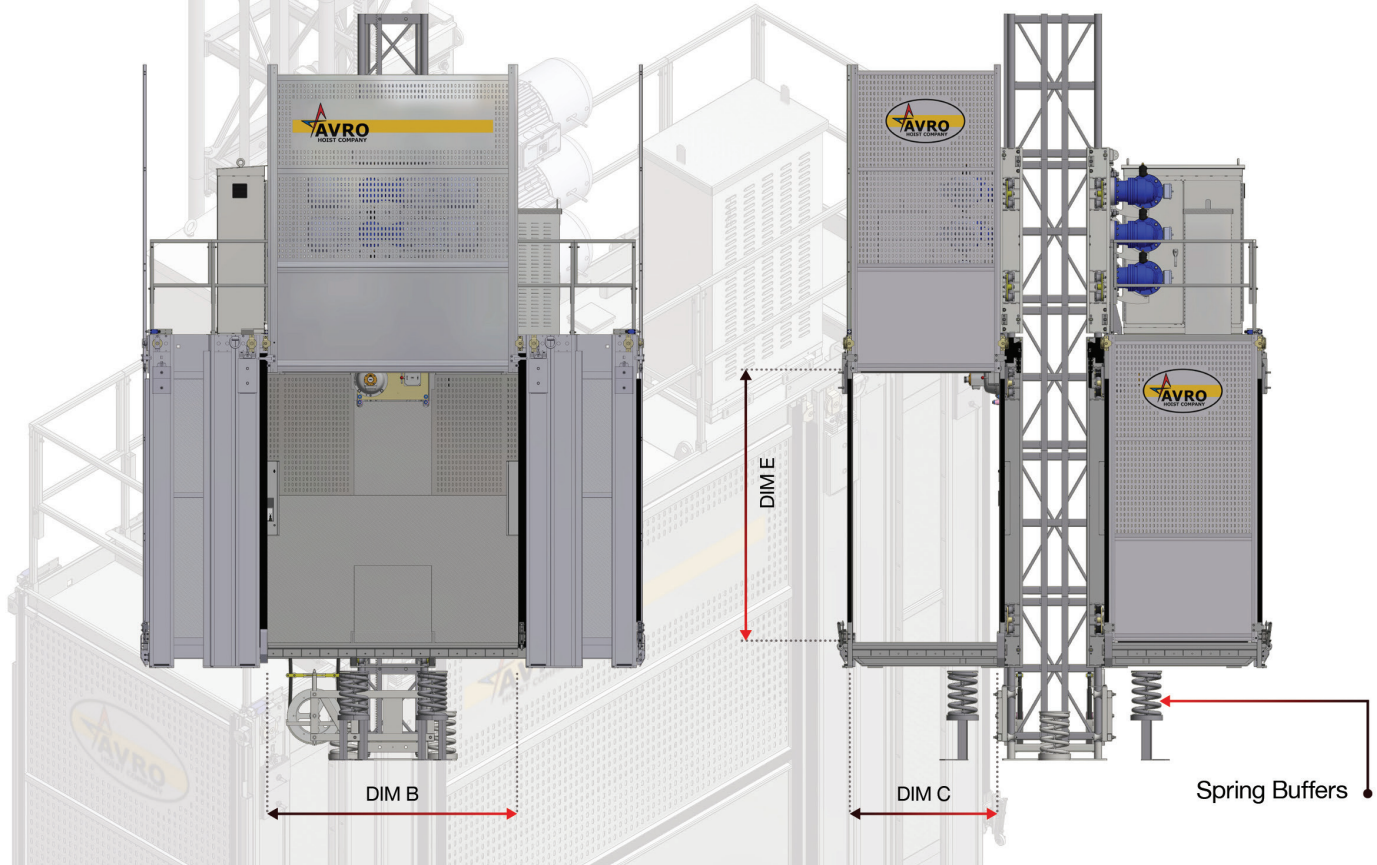
Type V Tie In

Power Cable Trolley

Ground Enclosure





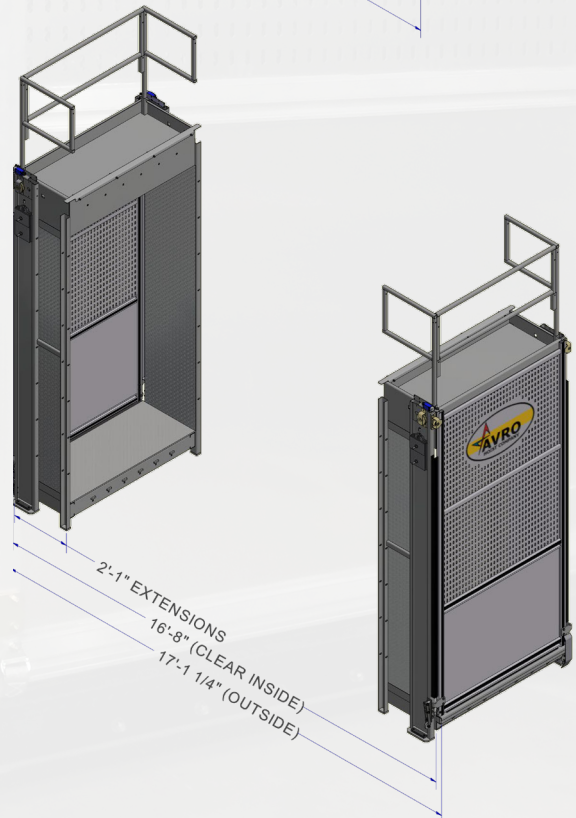
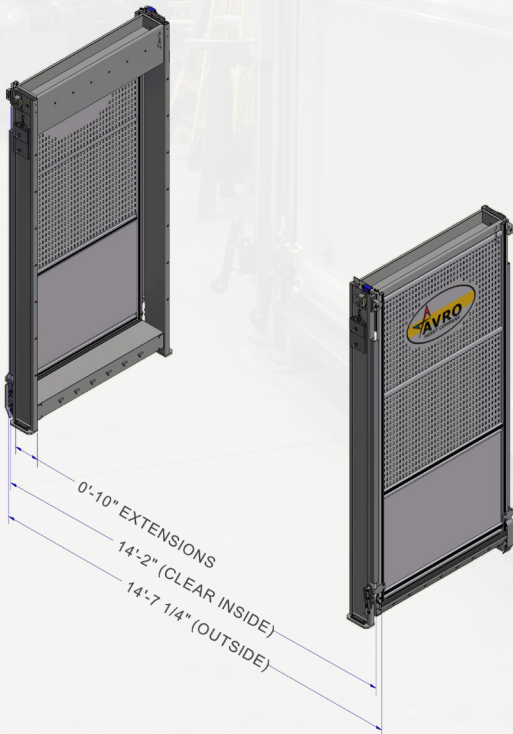
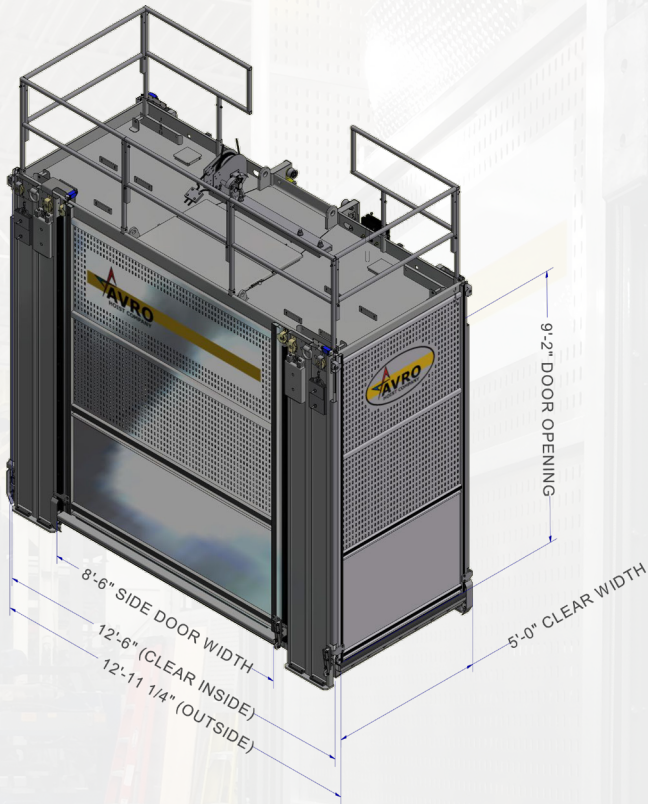


### AVR850 8500 lb Capacity Man & Material Hoist

AVRO Hoist Model:	AVR850		AVR850T	
Dimensions	Imperial	Metric	Imperial	Metric
A-Clear Inside Length	16'8"	5.08 m	16'8"	5.08 m
B-Optional Side Door Width	8'6"	2.59 m	8'6"	2.59 m
C-Front/Rear Doors Width	5'0"	1.52 m	5'0"	1.52 m
D-Overall Height	9'6"	2.90 m	11'6"	3.51 m
E-Door Opening Height	6'6"	2.00 m	8'-0"	2.44 m
F-Enclosure Height	12'10"	3.91 m	13'10"	4.22 m
G-Enclosure Length	18'6"	5.64 m	18'6"	5.64 m
H-Enclosure Width	16'0"	4.88 m	17'8"	5.39 m
I-Enclosure Loading Height	4'4"	1.32 m	4'4"	1.32 m



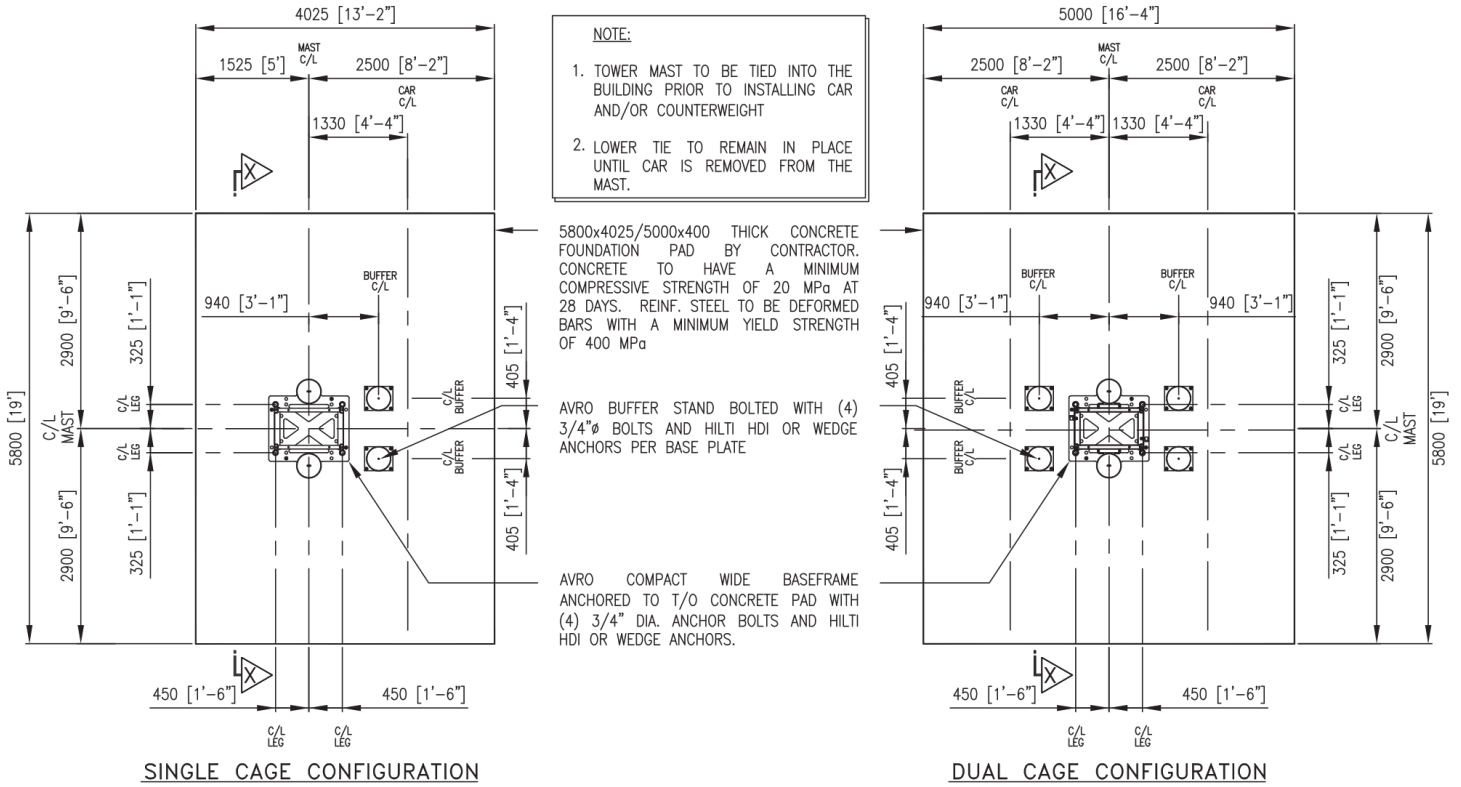
# AVR850 CONFIGURATIONS



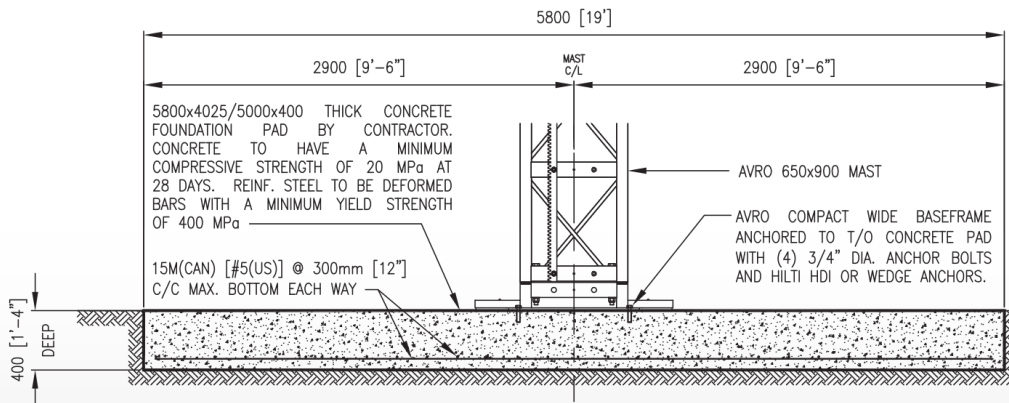


# AVR850 8500 lb Capacity Man & Material Hoist

## AVRO 650X900 MAST



FOUNDATION PAD PLAN LAYOUT

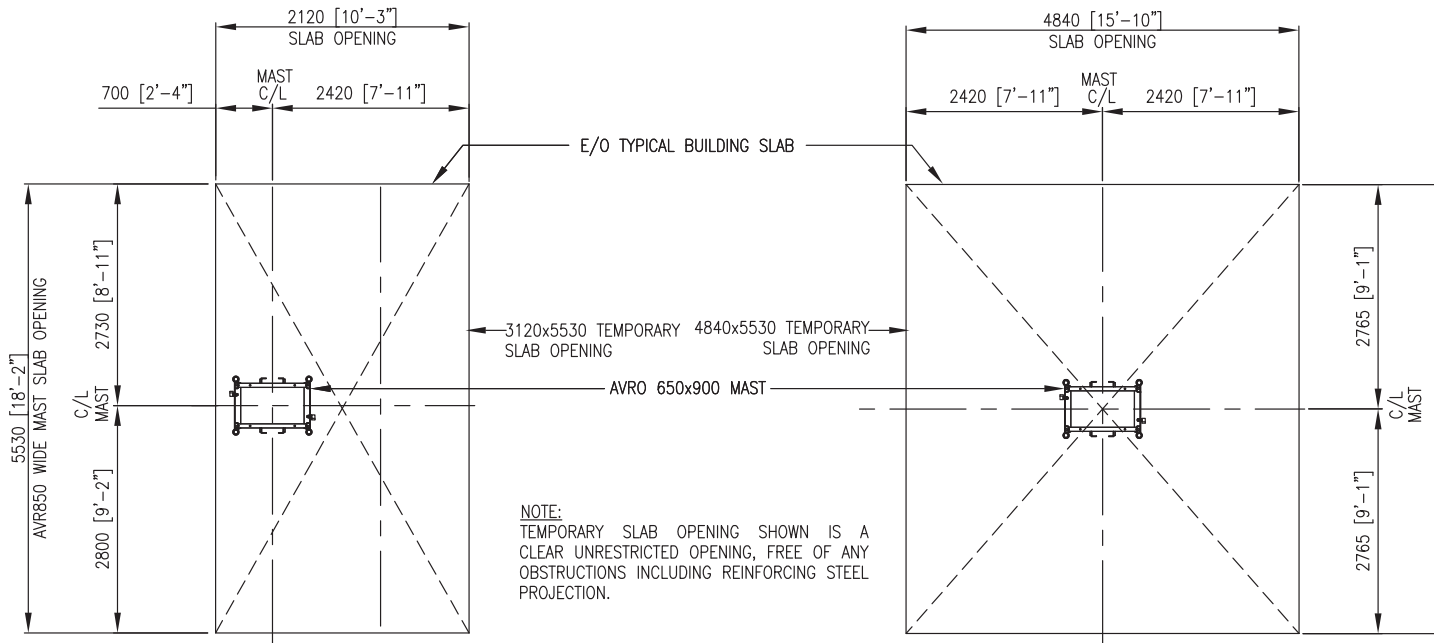


**NOTE:**  
 ALL HOIST CAGES ARE DESIGNED AND BUILT IN CONFORMANCE WITH CAN/CSA-Z185-M87 LOCAL SAFETY CODE.  
 ALL SIZES AND DIMENSION ARE SUBJECT TO CHANGE AT ANY TIME WITHOUT NOTICE AND MUST BE VERIFIED BY LOCAL CERTIFIED ENGINEER.  
 ANY CHANGES OR MODIFICATION SHOULD BE CONSULTED WITH AVRO HOIST COMPANY.  
 ALL TIE-IN ANCHOR SPECIFICATION AND/OR EXISTING STRUCTURE REINFORCING TO BE DESIGNED AND APPROVED AS PER LOCAL SAFETY STANDARDS AND REGULATION BY LOCAL CERTIFIED ENGINEER PRIOR TO ANY WORK COMMENCING.

**NOTE:**  
 SOIL ENGINEER FOR THE PROJECT TO ENSURE THAT SOIL UNDER HOIST PAD IS CAPABLE OF SUPPORTING A CAPACITY OF 3,000PSF.

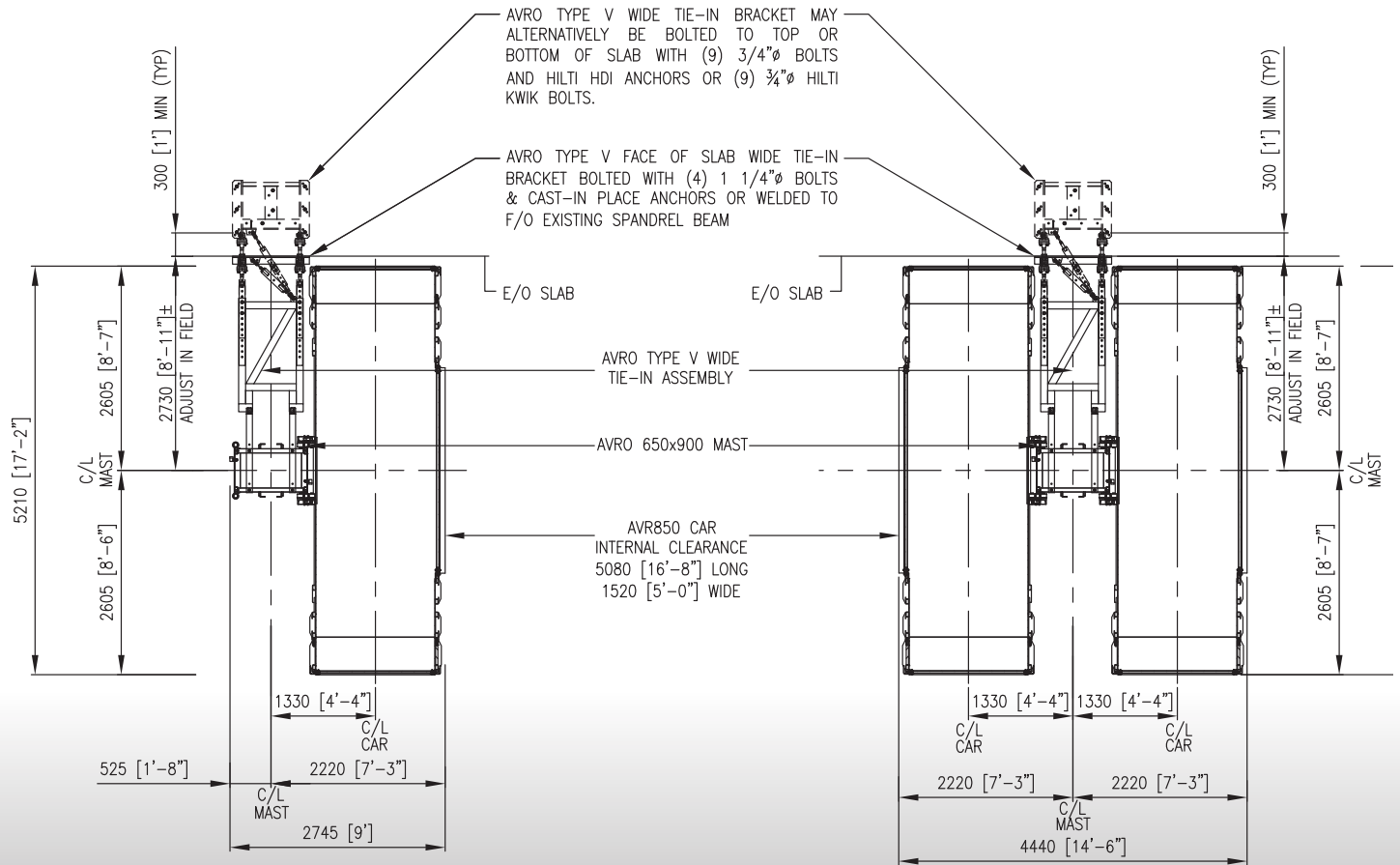
FOUNDATION PAD SECTION X-X





SINGLE CAGE SLAB OPENING PLAN LAYOUT

DUAL CAGE SLAB OPENING PLAN LAYOUT



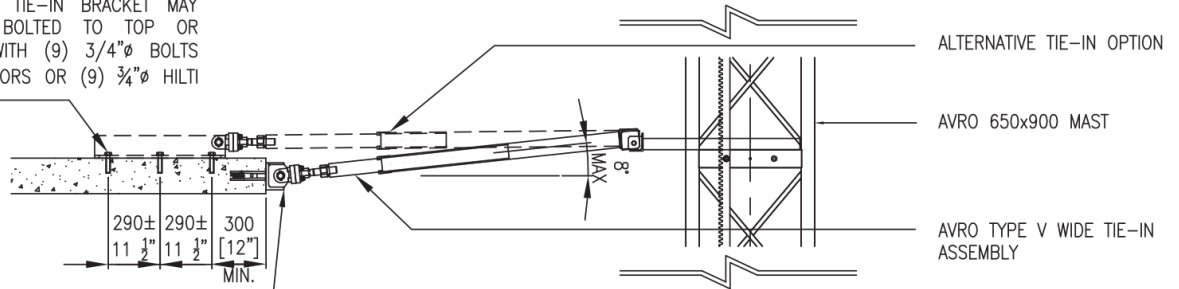
AVRO AVR850 SINGLE CAGE  
TYPICAL TYPE V TIE-IN DETAIL PLAN LAYOUT

AVRO AVR850 DUAL CAGE  
TYPICAL TYPE V TIE-IN DETAIL PLAN LAYOUT

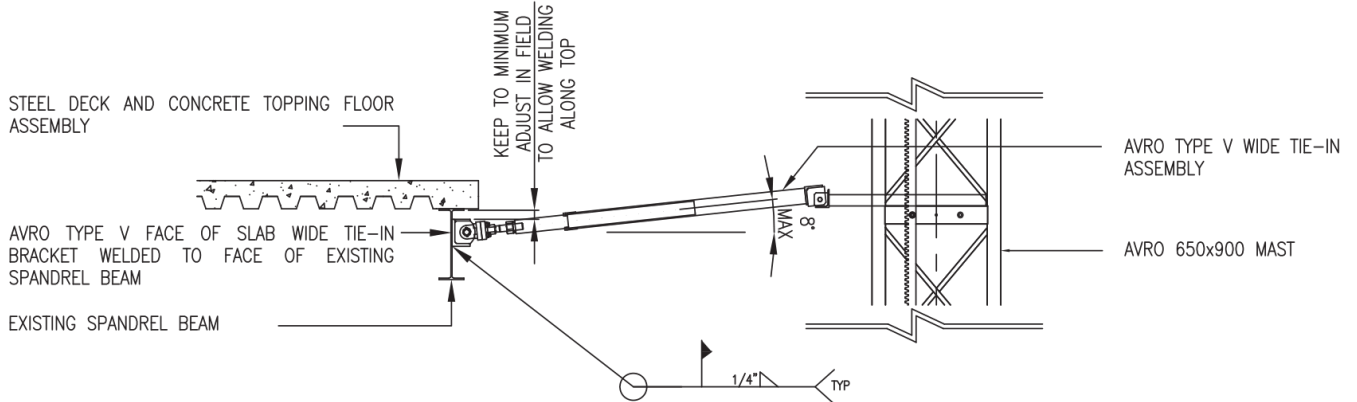


AVRO TYPE V WIDE TIE-IN BRACKET MAY ALTERNATIVELY BE BOLTED TO TOP OR BOTTOM OF SLAB WITH (9) 3/4"Ø BOLTS AND HILTI HDI ANCHORS OR (9) 3/4"Ø HILTI KWIK BOLTS.

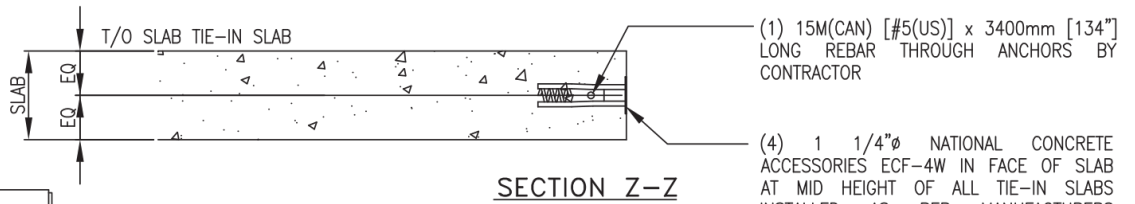
AVRO TYPE V FACE OF SLAB WIDE TIE-IN BRACKET BOLTED WITH (4) 1 1/4"Ø BOLTS



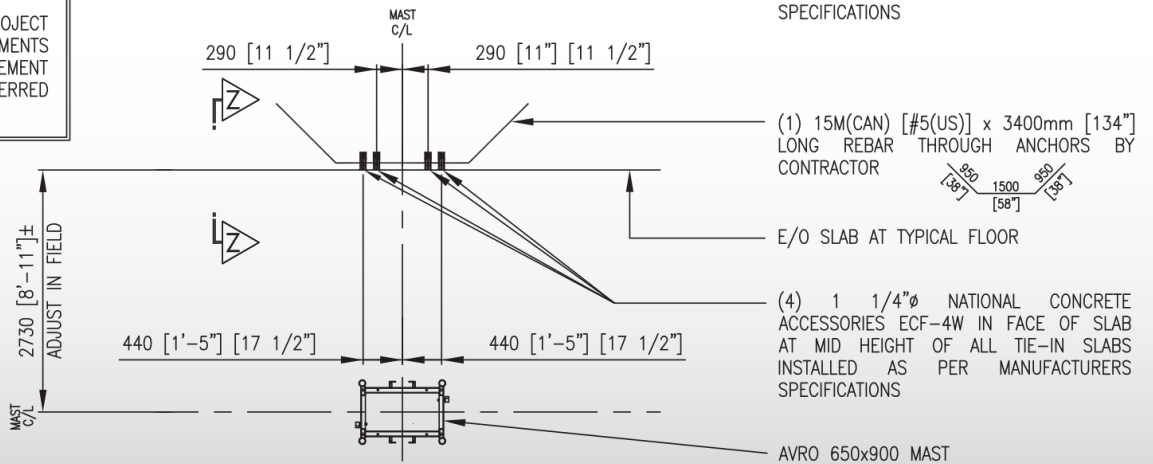
**TYPICAL AVRO TYPE V WIDE TIE-IN DETAIL SECTION INTO CONCRETE FLOOR SLAB ASSEMBLY**



**TYPICAL AVRO TYPE V WIDE TIE-IN DETAIL SECTION INTO STEEL DECK & CONCRETE FLOOR ASSEMBLY**



**NOTE:**  
STRUCTURAL ENGINEER FOR THE PROJECT IS TO DETERMINE THE REQUIREMENTS FOR ADDITIONAL FRAMING REINFORCEMENT TO SUPPORT THE LOADS TRANSFERRED TO STRUCTURE FROM HOIST.



**AVRO TYPE V WIDE MAST CAST-IN PLACE ANCHOR LAYOUT AT ALL TIE-IN SLABS**

# IMPERIAL

TECHICAL DATA	Standard Speed (SS)	Medium Speed (MS)	High Speed (HSC)
Configuration	Twin cage hoist	Twin cage hoist	Twin cage hoist
Rated load capacity (per car)	8,500 lbs	8,500 lbs	8,500 lbs
Rated speed	150 fpm	200 fpm	300 fpm
Counterweight	N/A	N/A	Yes
Maximum travel distance	1475 ft	1475 ft	1475 ft
Lifting device (Jump pole) cap.	750 lbs	750 lbs	750 lbs
Safety device	Type D	Type D	Type D
Worm gear ratio	15:1	20:1	13:1
Brake rating (per motor)	221 ft-lbs	221 ft-lbs	221 ft-lbs
ELECTRICAL DATA			
Power supply	460/3/60	460/3/60	460/3/60
Horsepower	(3)x30 hp	(3)x30 hp	(3)x30 hp
Full load current	150 Amp	200 Amp	200 Amp
Starting current	Varies	Varies	Varies
Variable frequency drive	120 hp	120 hp	120 hp
Brake power supply	220VDC	220VDC	220VDC
WEIGHTS			
Gross weight (per car)	11,445 lbs	11,445 lbs	11,445 lbs
Weight of Counterweight	N/A	N/A	8,360 lbs
Weight of Mast (650x650x8mm)	462 lbs	462 lbs	462 lbs
Weight of Mast (650x900x8mm)	625 lbs	625 lbs	625 lbs
Weight of travelling cable system	4 lb/ft	4 lb/ft	4 lb/ft
Weight of Tie-in	10% of total mast	10% of total mast	10% of total mast



## METRIC

TECHICAL DATA	Standard Speed (SS)	Medium Speed (MS)	High Speed (HSC)
Configuration	Twin cage hoist	Twin cage hoist	Twin cage hoist
Rated load capacity (per car)	3,800 kg	3,800 kg	3,800 kg
Rated speed	46 m/min	61 m/min	91 m/min
Counterweight	N/A	N/A	Yes
Maximum travel distance	450 m	450 m	450 m
Lifting device (Jump pole) cap.	340 kg	340 kg	750 lbs
Safety device	Type D	Type D	Type D
Worm gear ratio	15:1	20:1	13:1
Brake rating (per motor)	300 Nm	300 Nm	300 Nm
ELECTRICAL DATA			
Power supply	460/3/60	460/3/60	460/3/60
Horsepower	(3)x22kW	(3)x22kW	(3)x22kW
Full load current	150 Amp	200 Amp	200 Amp
Starting current	Varies	Varies	Varies
Variable frequency drive	90kW	90kW	90KW
Brake power supply	220VDC	220VDC	220VDC
WEIGHTS			
Gross weight (per car)	5,200 kg	5,200 kg	5,200 kg
Weight of Counterweight	N/A	N/A	3,800 kg
Weight of Mast (650x650x8mm)	210 kg	210 kg	210 kg
Weight of Mast (650x900x8mm)	284 kg	284 kg	284 kg
Weight of travelling cable system	6 kg/m	6 kg/m	6 kg/m
Weight of Tie-in	10% of total mast	10% of total mast	10% of total mast

# AVR850

## AVR850





### **CONTACT**

Tel: (905) 362-3740

Fax: (905) 362-3744

[info@avrohoist.com](mailto:info@avrohoist.com)



### **ADDRESS**

6240 Danville Road  
Mississauga, ON, L5T 2H7