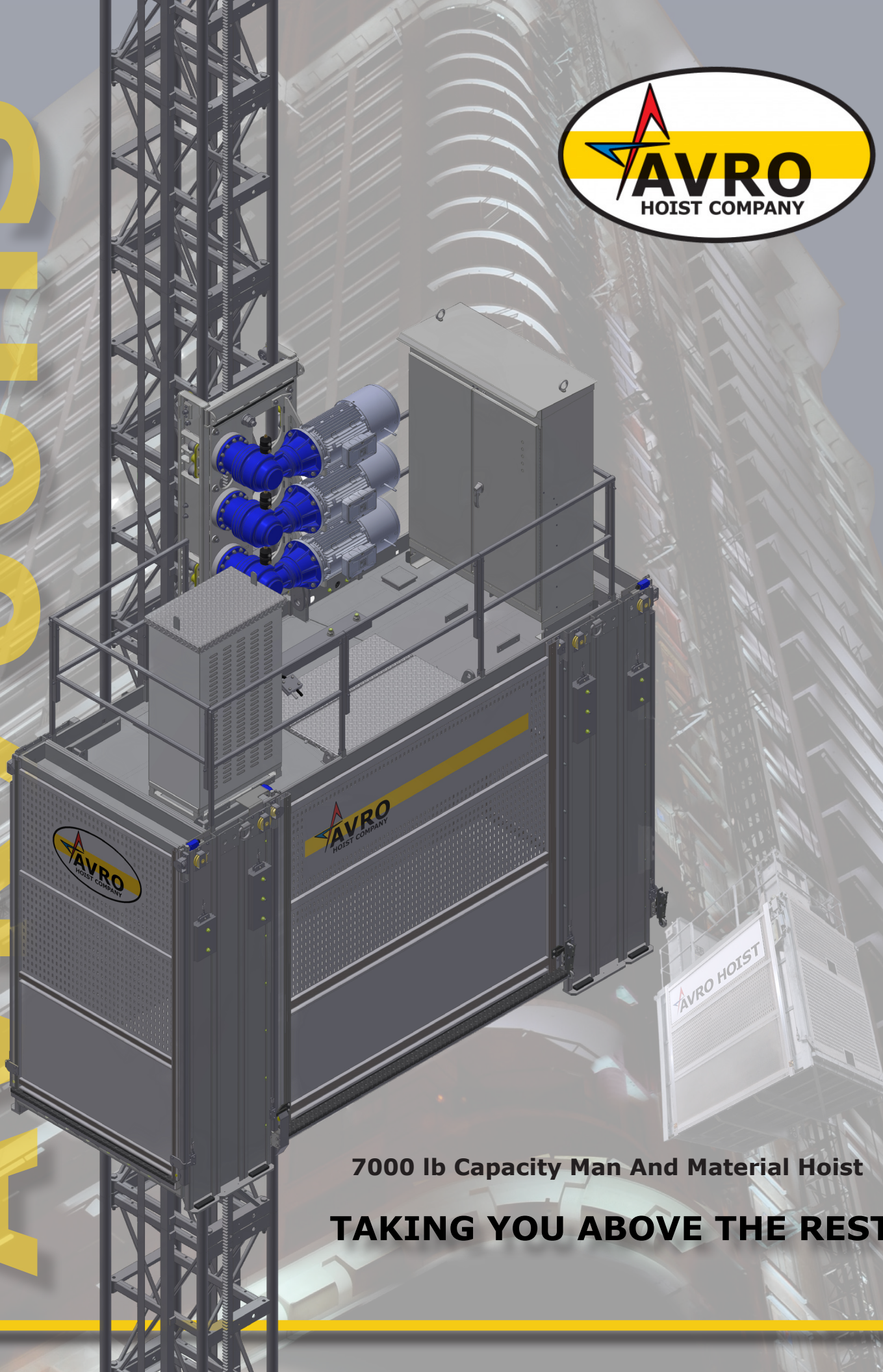
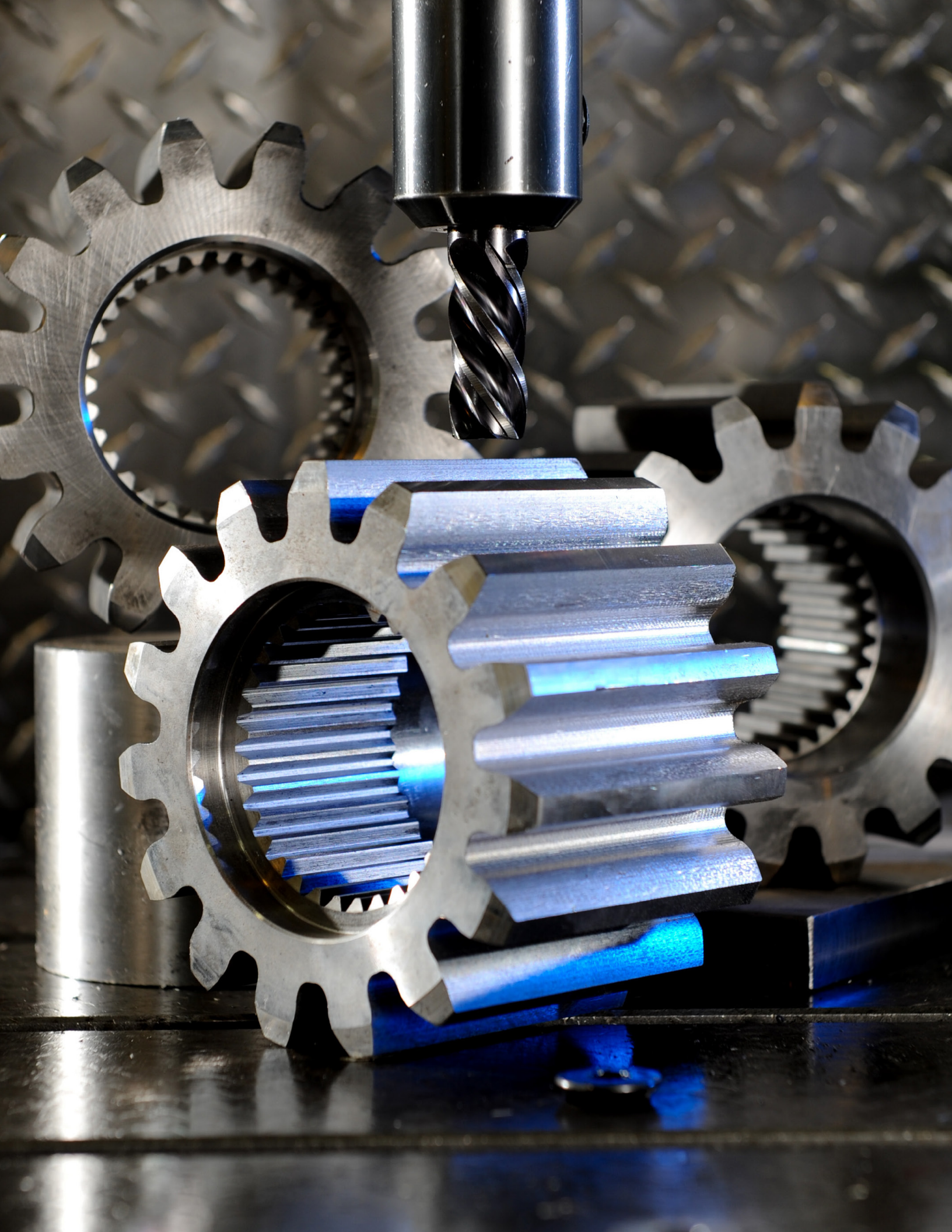
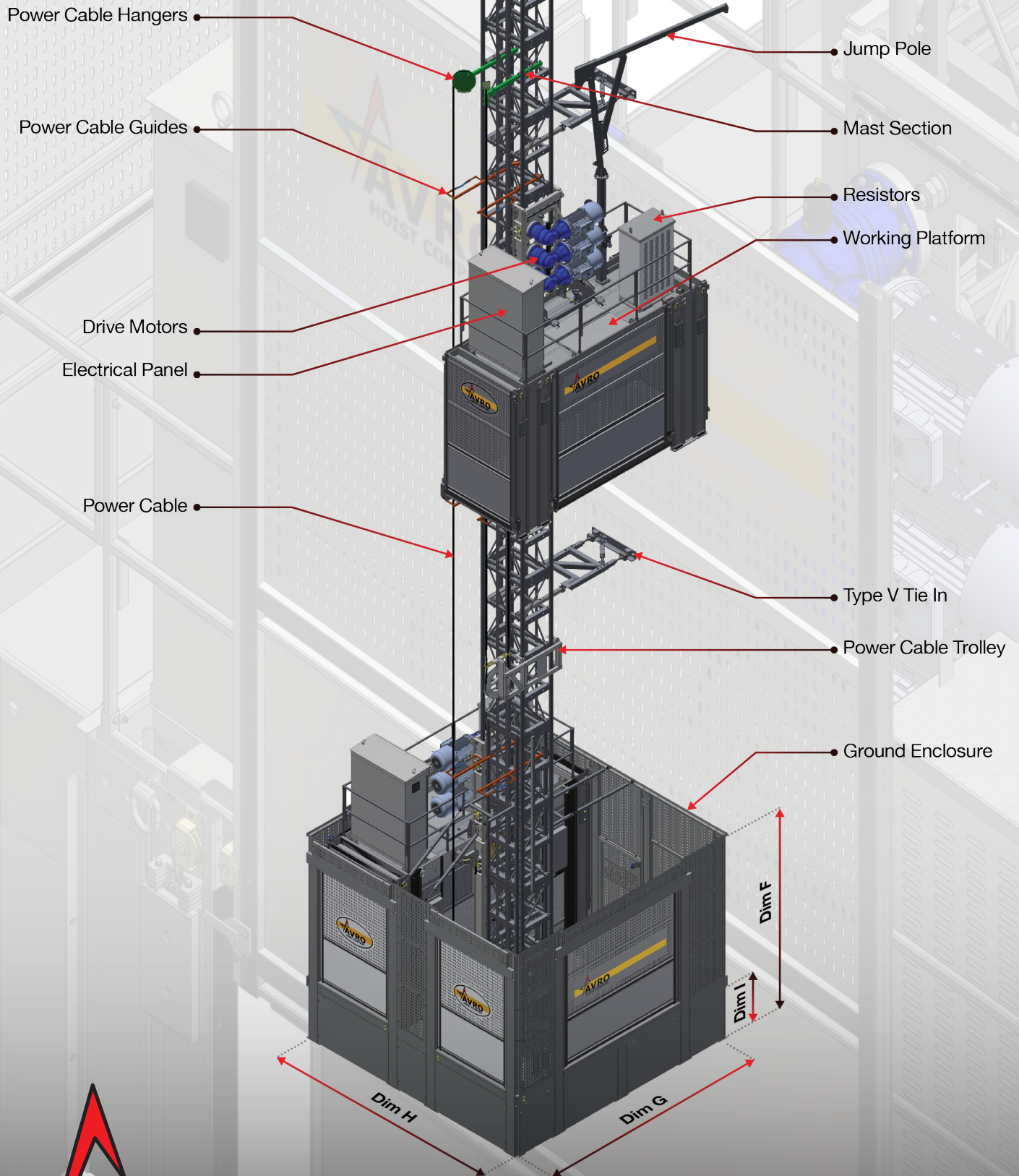


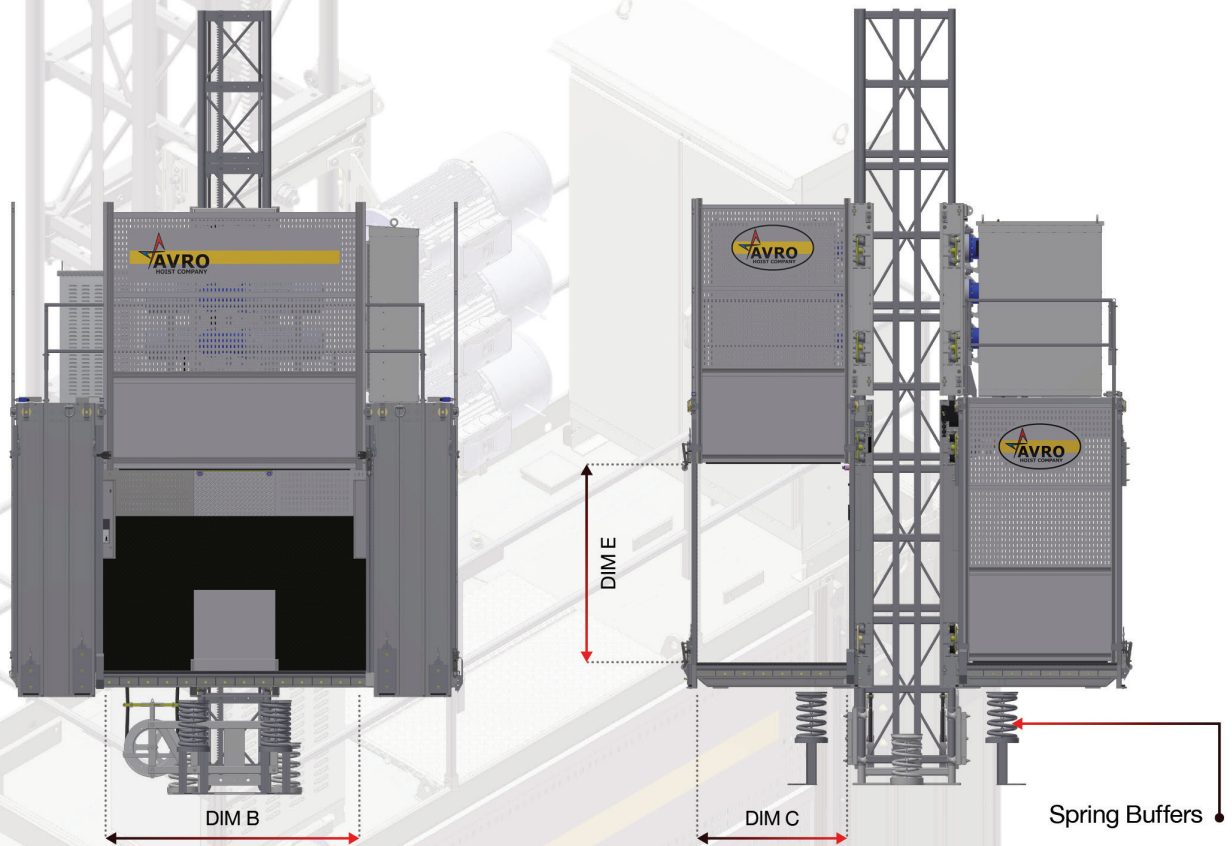
AVRO 7000S



7000 lb Capacity Man And Material Hoist
TAKING YOU ABOVE THE REST!







AVR700HS 7000 lb Capacity Man & Material Hoist

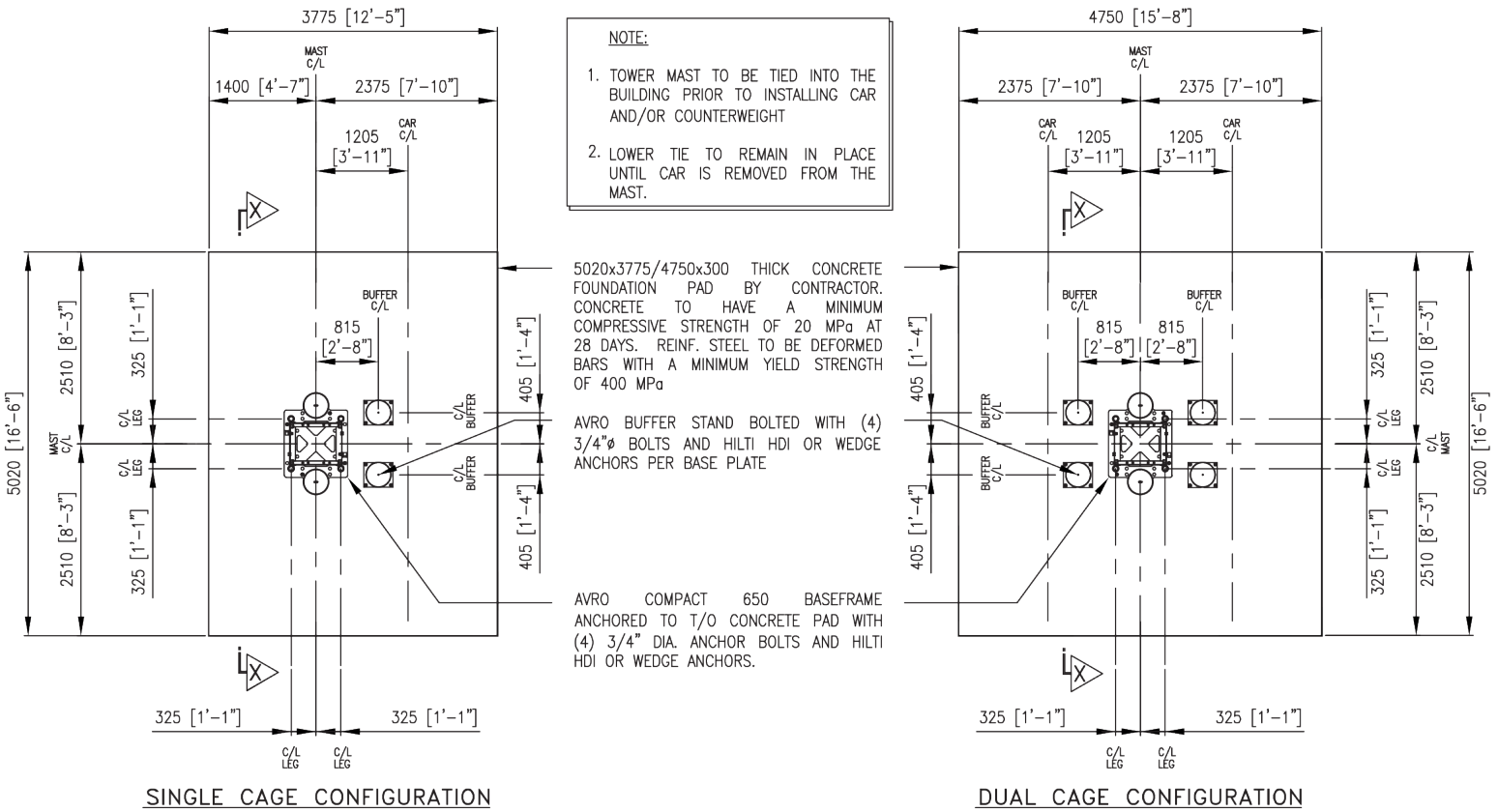
AVRO Hoist Model:	AVR700HS		AVR700THS	
-------------------	----------	--	-----------	--

Dimensions	Imperial	Metric	Imperial	Metric
A-Clear Inside Length	14'0"	4.27 m	14'0"	4.27 m
B-Optional Side Door Width	8'6"	2.59 m	8'6"	2.59 m
C-Front/Rear Doors Width	5'0"	1.52 m	5'0"	1.52 m
D-Overall Height	9'6"	2.90 m	11'6"	3.51 m
E-Door Opening Height	6'6"	2.00 m	8'-0"	2.44 m
F-Enclosure Height	12'10"	3.91 m	13'10"	4.22 m
G-Enclosure Length	15'6"	4.72 m	15'6"	4.72 m
H-Enclosure Width	16'0"	4.88 m	17'8"	5.39 m
I-Enclosure Loading Height	4'4"	1.32 m	4'4"	1.32 m

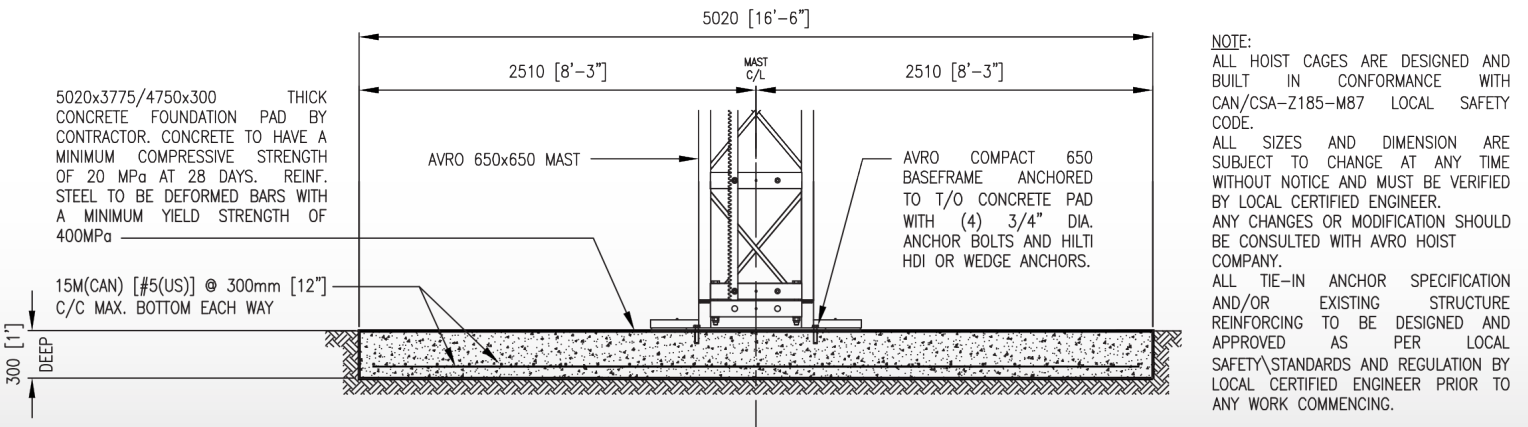
TECHNICAL DATA		
Configuration	Twin or Single cage	
Unit of Measure	Imperial	Metric
Rated capacity	7,000 lbs	3,175 kg
Rated speed	300 fpm	91 m/min
Counterweight	N/A	
Max travel distance	1475 ft	450 m
Lifting device cap.	750 lbs	340 kg
Safety device	Type D	
Gear Ratio	13:1	
Brake Torque per	221 ft-lbs	300 Nm
ELECTRICAL DATA		
Power supply	460/3/6	
Motor Power	(3) x 30hp	(3) x 22kW
Full load current	200 Amp	
Starting current	Varies	
Frequency drive	100 hp	132kW
Brake power supply	220VDC	
WEIGHTS		
Gross per car	9,500 lbs	4,300 kg
Mast (650x650x8)	550 lbs	250 kg
Traveling cable	4 lb/ft	6 kg/m
Tie-in	10% of total mast	

AVR700HS 7000 lb Capacity Man & Material Hoist

AVRO 650X650 MAST

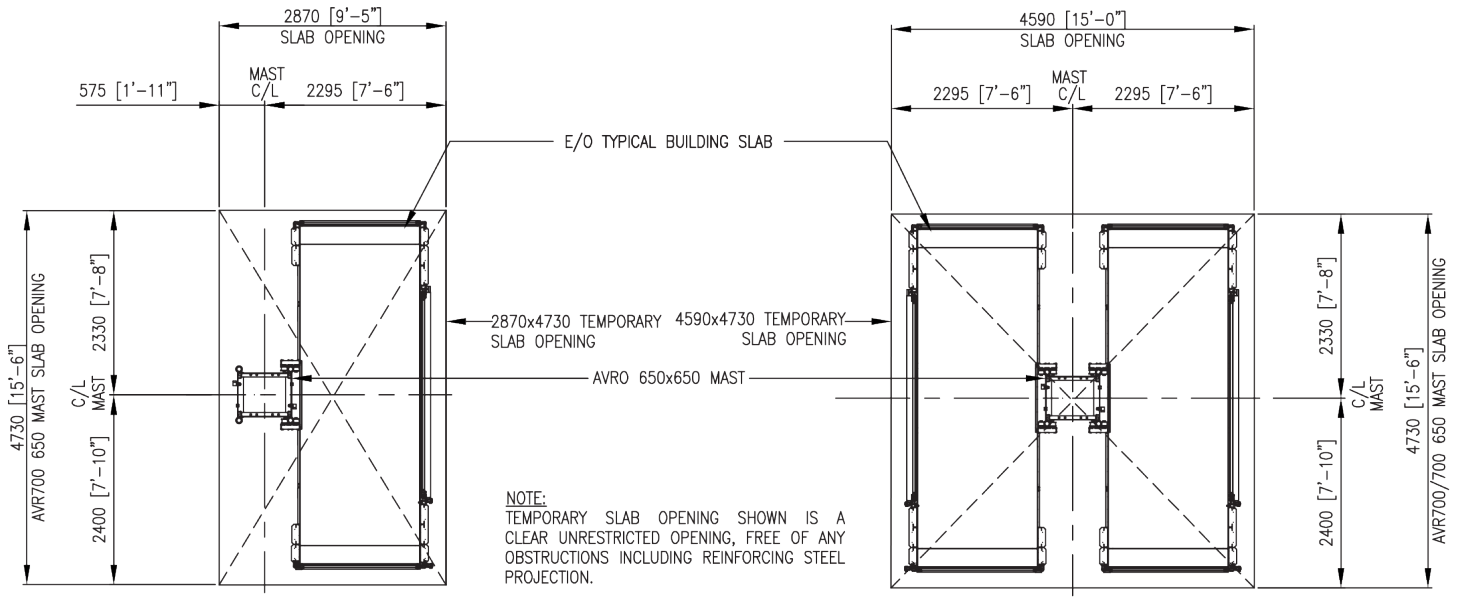


FOUNDATION PAD PLAN LAYOUT



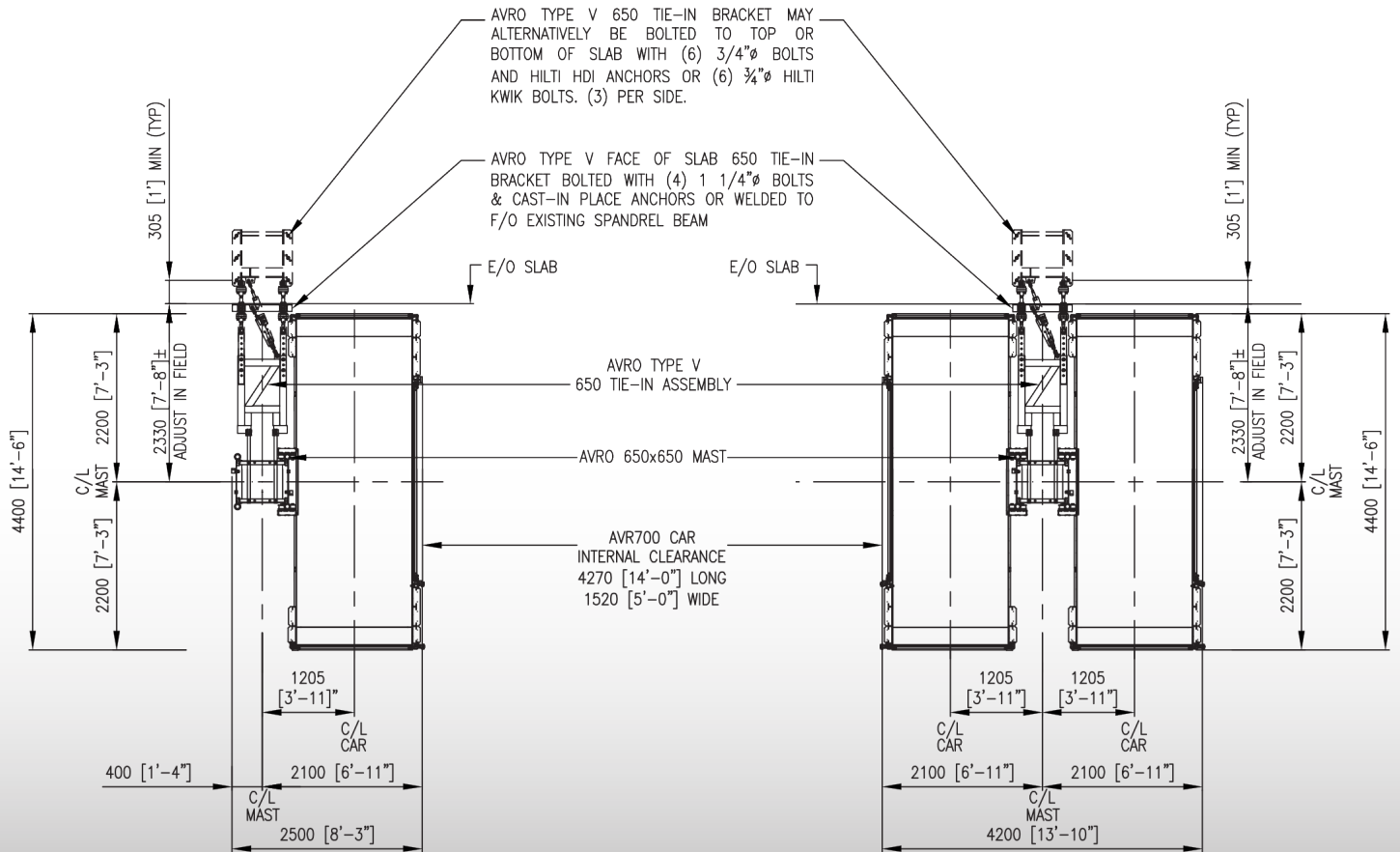
FOUNDATION PAD SECTION X-X

NOTE:
SOIL ENGINEER FOR THE PROJECT TO ENSURE THAT SOIL UNDER HOIST PAD IS CAPABLE OF SUPPORTING A CAPACITY OF 3,000PSF.



SINGLE CAGE SLAB OPENING PLAN LAYOUT

DUAL CAGE SLAB OPENING PLAN LAYOUT

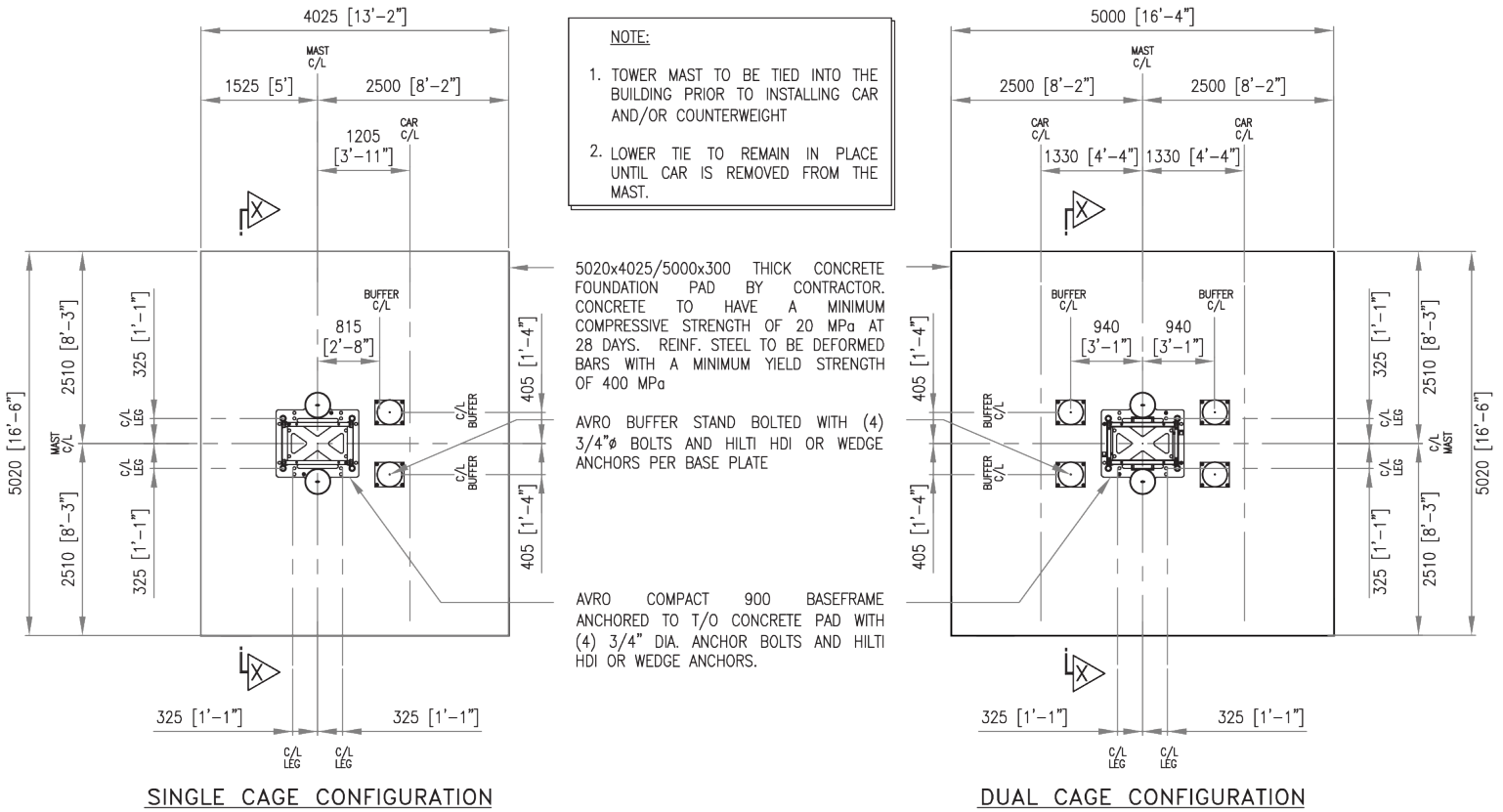


AVRO AVR700 SINGLE CAGE
TYPICAL TYPE V TIE-IN DETAIL PLAN LAYOUT

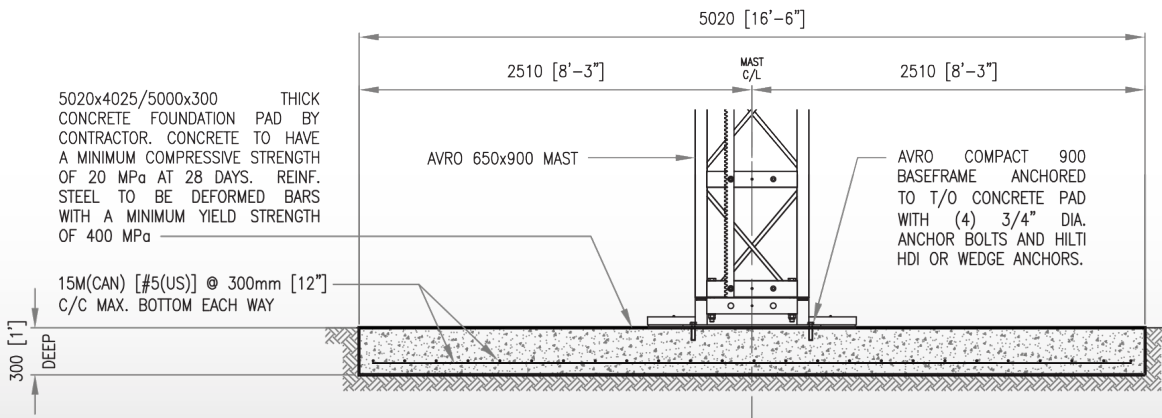
AVRO AVR700 DUAL CAGE
TYPICAL TYPE V TIE-IN DETAIL PLAN LAYOUT

AVR700HS 7000 lb Capacity Man & Material Hoist

AVRO 650X900 MAST



FOUNDATION PAD PLAN LAYOUT



NOTE:

ALL HOIST CAGES ARE DESIGNED AND BUILT IN CONFORMANCE WITH CAN/CSA-Z185-M87 LOCAL SAFETY CODE.

ALL SIZES AND DIMENSION ARE SUBJECT TO CHANGE AT ANY TIME WITHOUT NOTICE AND MUST BE VERIFIED BY LOCAL CERTIFIED ENGINEER.

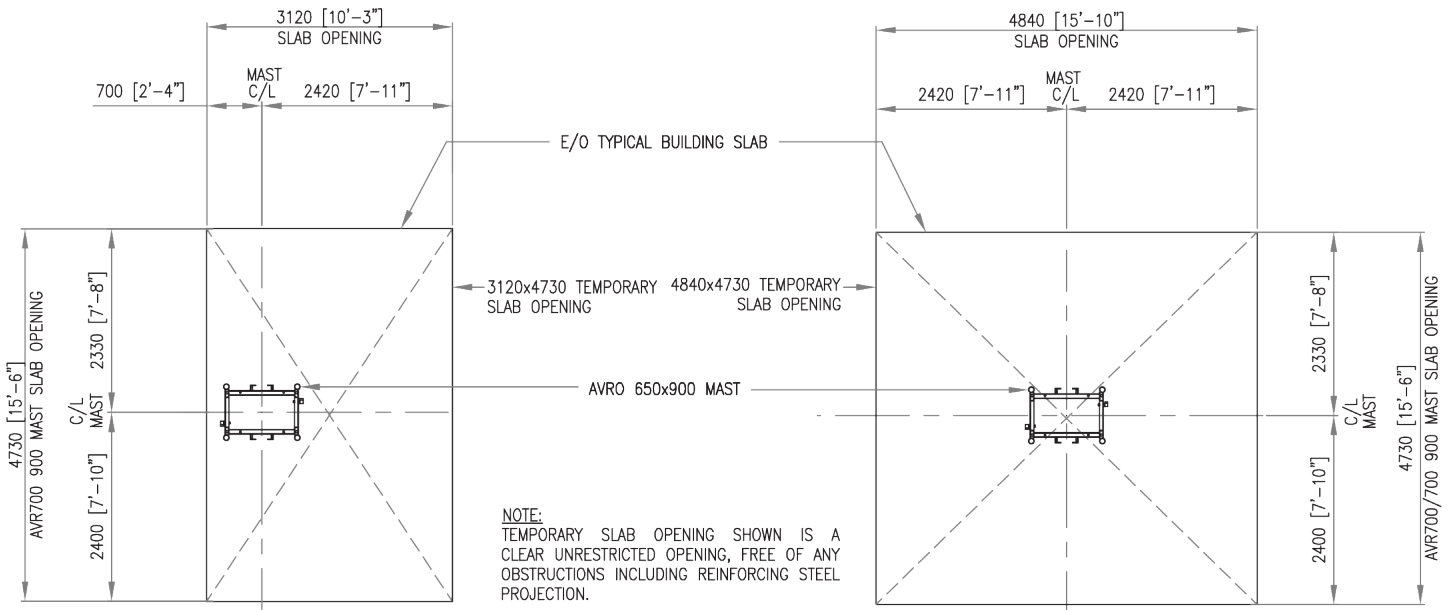
ANY CHANGES OR MODIFICATION SHOULD BE CONSULTED WITH AVRO HOIST COMPANY.

ALL TIE-IN ANCHOR SPECIFICATION AND/OR EXISTING STRUCTURE REINFORCING TO BE DESIGNED AND APPROVED AS PER LOCAL SAFETY STANDARDS AND REGULATION BY LOCAL CERTIFIED ENGINEER PRIOR TO ANY WORK COMMENCING.

NOTE:

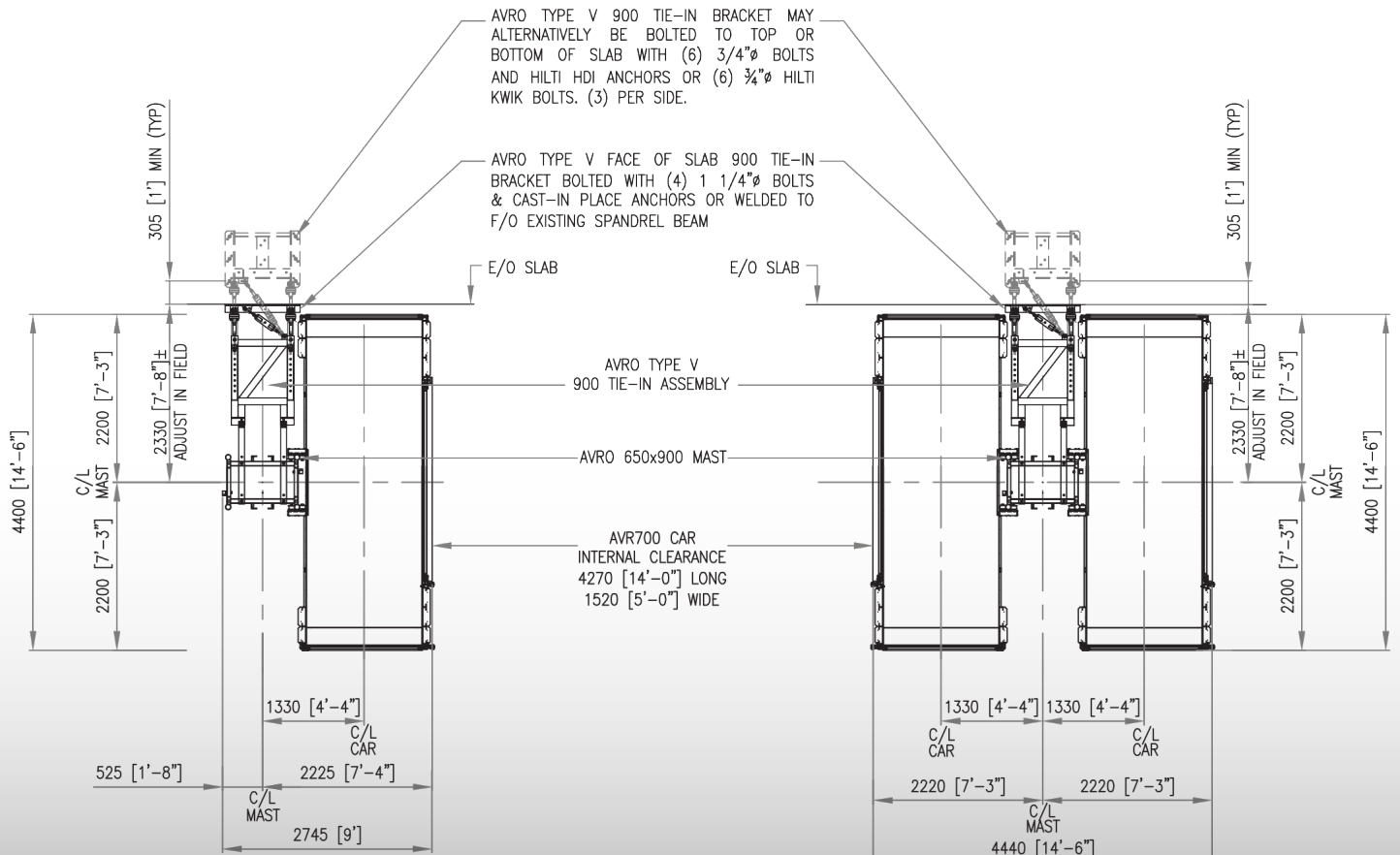
SOIL ENGINEER FOR THE PROJECT TO ENSURE THAT SOIL UNDER HOIST PAD IS CAPABLE OF SUPPORTING A CAPACITY OF 3,000PSF.

FOUNDATION PAD SECTION X-X



SINGLE CAGE SLAB OPENING PLAN LAYOUT

DUAL CAGE SLAB OPENING PLAN LAYOUT

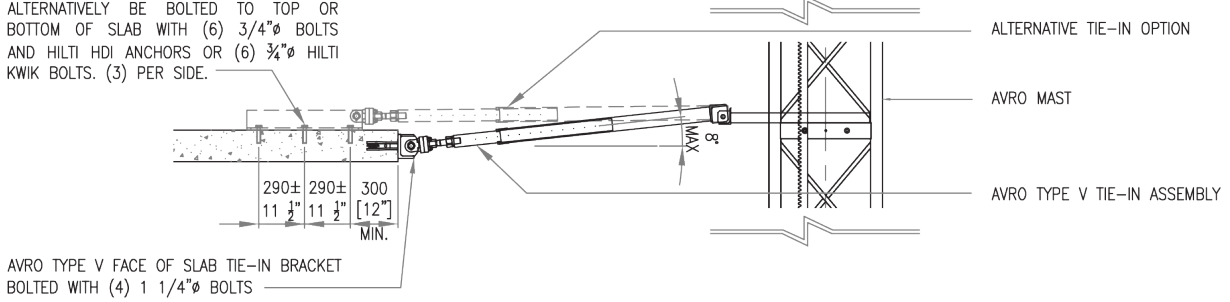


AVRO AVR700 SINGLE CAGE
TYPICAL TYPE V TIE-IN DETAIL PLAN LAYOUT

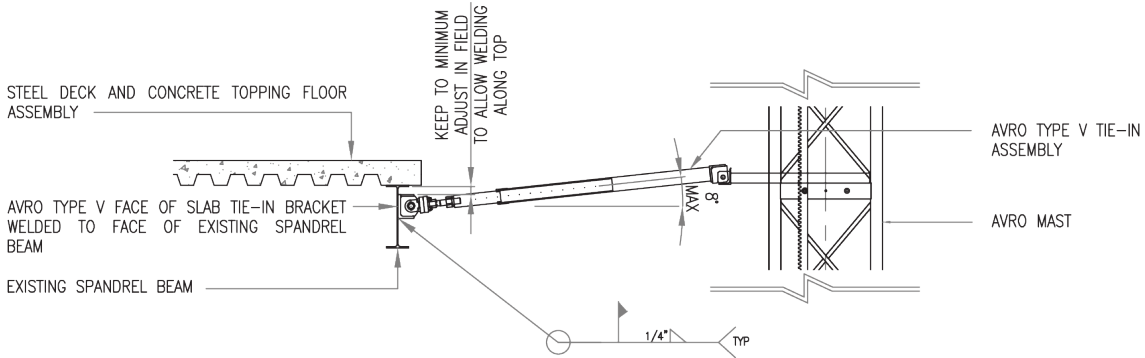
AVRO AVR700 DUAL CAGE
TYPICAL TYPE V TIE-IN DETAIL PLAN LAYOUT

AVR700HS 7000 lb Capacity Man & Material Hoist

AVRO TYPE V TIE-IN BRACKET MAY ALTERNATIVELY BE BOLTED TO TOP OR BOTTOM OF SLAB WITH (6) 3/4"Ø BOLTS AND HILTI HDI ANCHORS OR (6) 3/4"Ø HILTI KWIK BOLTS. (3) PER SIDE.

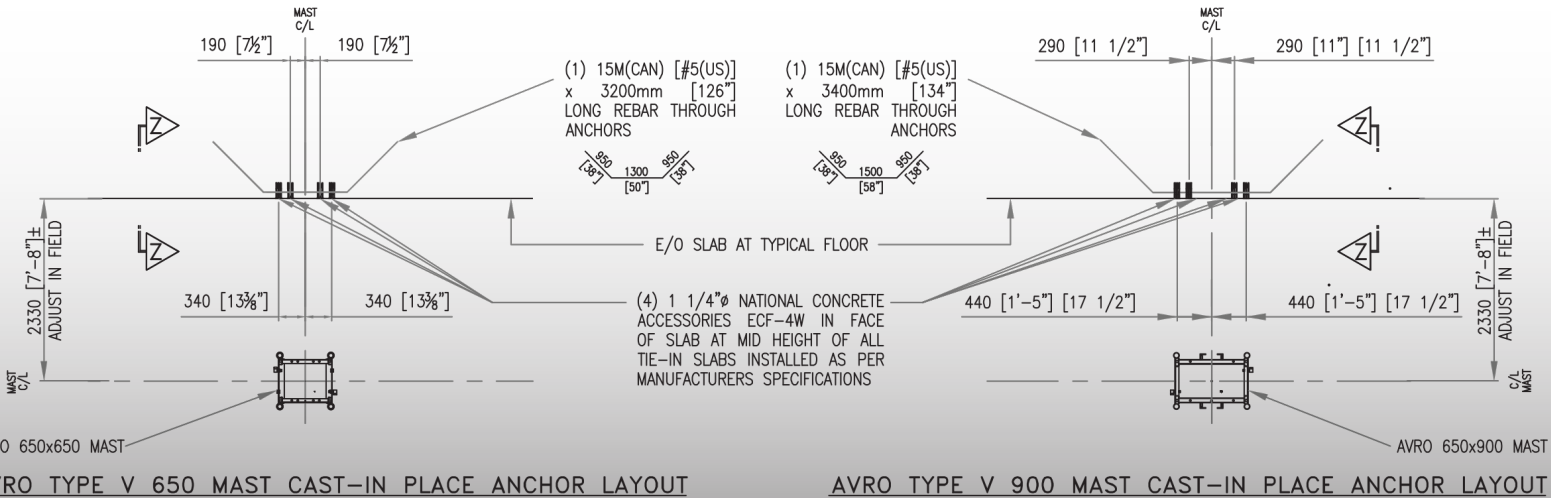
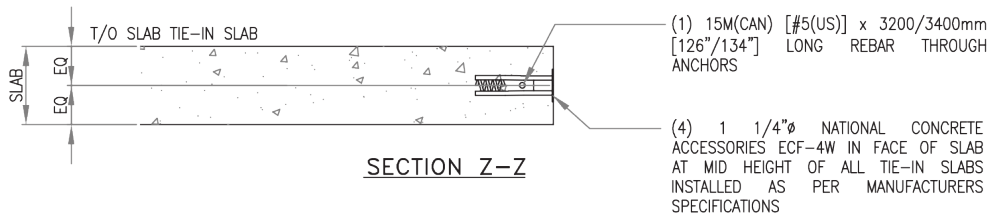


TYPICAL AVRO TYPE V TIE-IN DETAIL SECTION INTO CONCRETE FLOOR SLAB ASSEMBLY



TYPICAL AVRO TYPE V TIE-IN DETAIL SECTION INTO STEEL DECK & CONCRETE FLOOR ASSEMBLY

NOTE:
STRUCTURAL ENGINEER FOR THE PROJECT IS TO DETERMINE THE REQUIREMENTS FOR ADDITIONAL FRAMING REINFORCEMENT TO SUPPORT THE LOADS TRANSFERRED TO STRUCTURE FROM HOIST.



**AVRO 650x650 MAST
AVRO TYPE V 650 MAST CAST-IN PLACE ANCHOR LAYOUT**

**AVRO 650x900 MAST
AVRO TYPE V 900 MAST CAST-IN PLACE ANCHOR LAYOUT**

AVR7000

AVR7000HS



CONTACT

Tel: (905) 362-3740

Fax: (905) 362-3744

info@avrohoist.com



ADDRESS

6240 Danville Road
Mississauga, ON, L5T 2H7