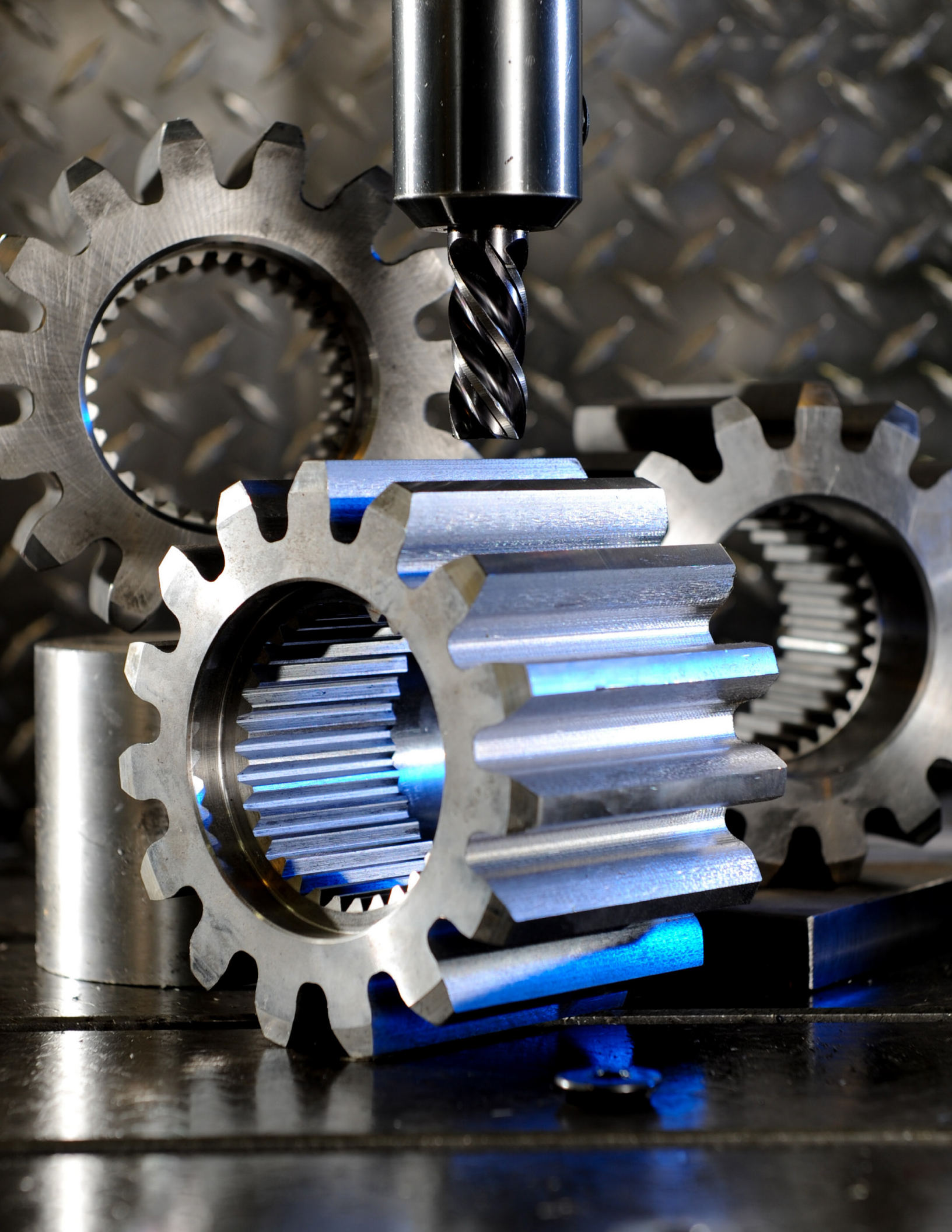
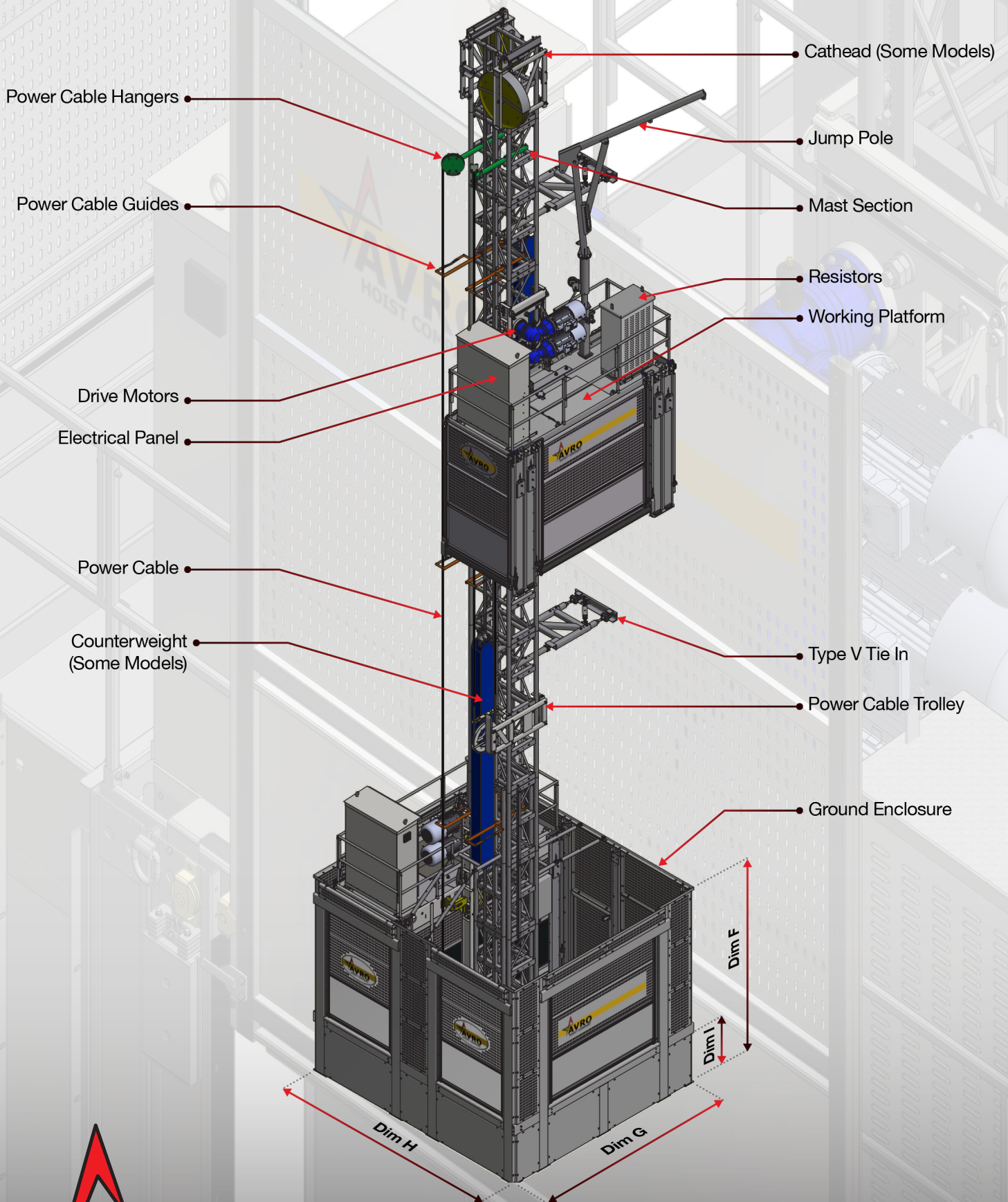
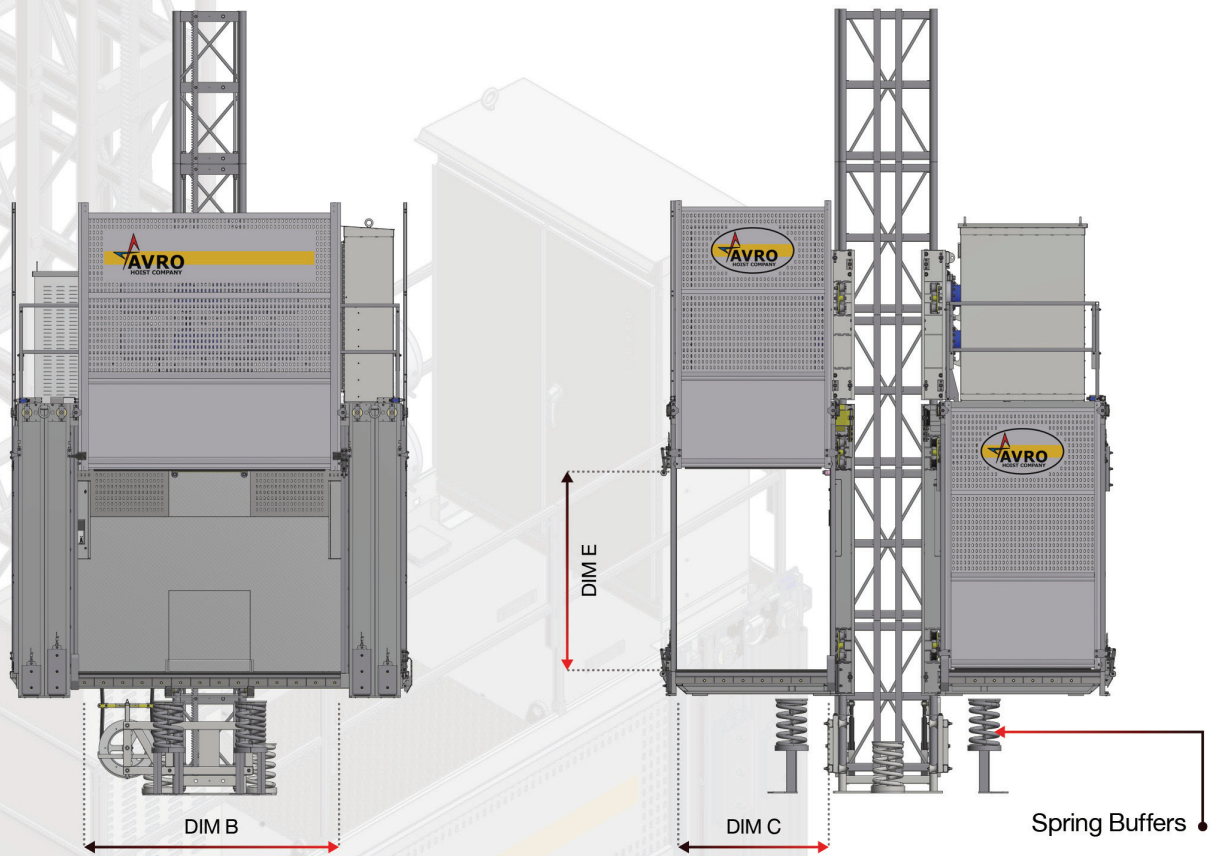


6000 lb Capacity Man And Material Hoist

TAKING YOU ABOVE THE REST!







AVR600 6000 lb Capacity Man & Material Hoist

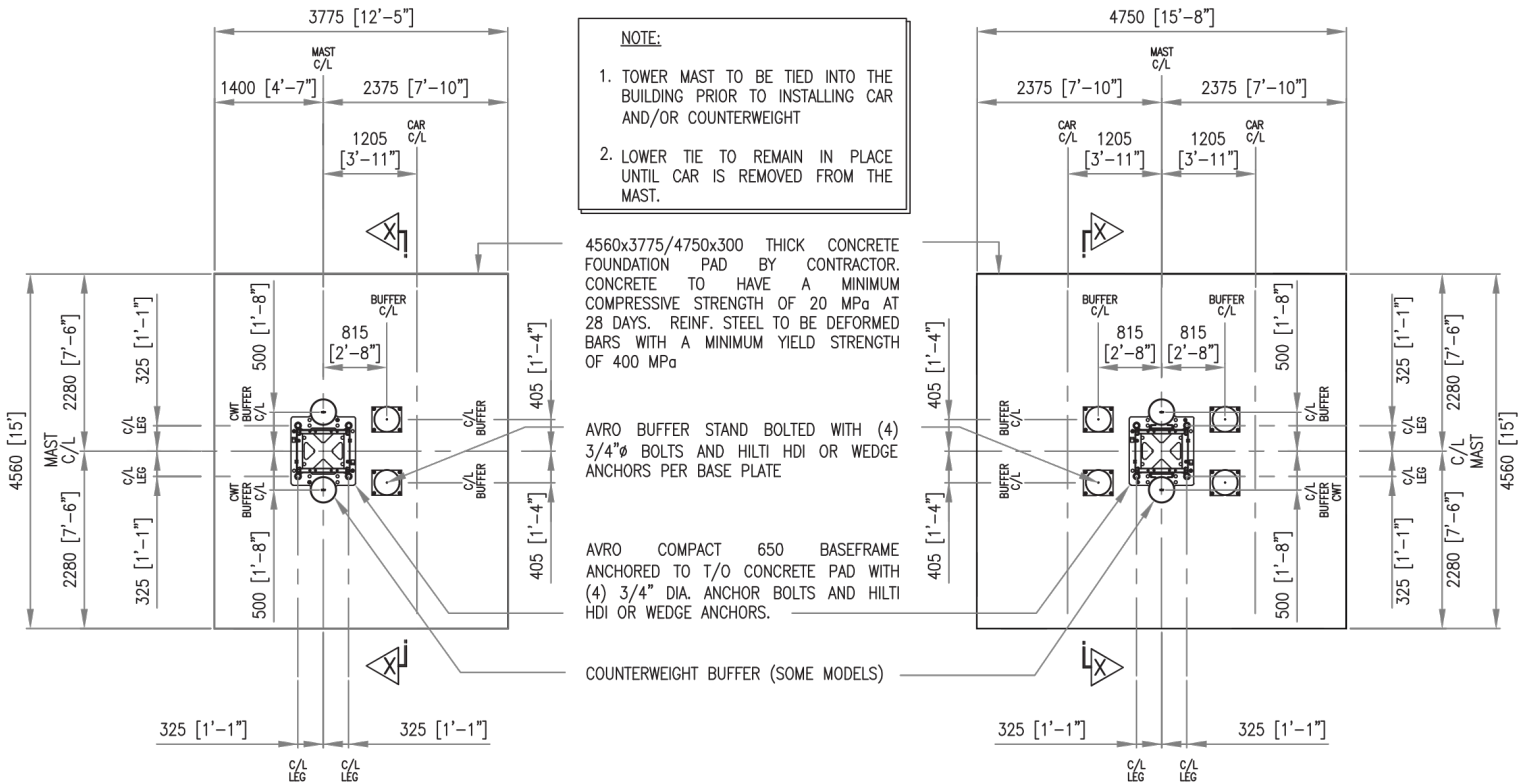
AVRO Hoist Model:	AVR600		AVR600T	
-------------------	--------	--	---------	--

Dimensions	Imperial	Metric	Imperial	Metric
A-Clear Inside Length	12'6"	3.81 m	12'6"	3.81 m
B-Optional Side Door Width	8'6"	2.59 m	8'6"	2.59 m
C-Front/Rear Doors Width	5'0"	1.52 m	5'0"	1.52 m
D-Overall Height	9'6"	2.9 m	11'6"	3.51 m
E-Door Opening Height	6'6"	2 m	8'0"	2.44 m
F-Enclosure Height	12'10"	3.91 m	13'10"	4.22 m
G-Enclosure Length	14'4"	4.37 m	14'4"	4.37 m
H-Enclosure Width	16'0"	4.88 m	17'8"	5.39 m
I-Enclosure Loading Height	4'4"	1.32 m	4'4"	1.32 m

TECHNICAL DATA						
Travel Speed	Standard (SS)		Medium (MS)		High (HSC)	
Configuration	Twin or Single cage		Twin or Single cage		Twin or Single cage	
Unit of Measure	Imperial	Metric	Imperial	Metric	Imperial	Metric
Rated capacity	6,000 lbs	2,700 kg	6,000 lbs	2,700 kg	6,000 lbs	2,700 kg
Rated Speed	150 fpm	46 m/min	200 fpm	61 m/min	300 fpm	91 m/min
Counterweight	N/A		N/A		Yes	
Max travel distance	1475 ft	450 m	1475 ft	450 m	1475 ft	450 m
Lifting device cap.	750 lbs	340 kg	750 lbs	340 kg	750 lbs	340 kg
Safety device	Type D		Type D		Type D	
Gear Ratio	15:1		20:1		13:1	
Brake Torque per	221 ft-lbs	300 Nm	221 ft-lbs	300 Nm	221 ft-lbs	300Nm
ELECTRICAL DATA						
Power supply	460/3/60		460/3/60		460/3/60	
Motor Power (2) x	30hp	22kW	30hp	22kW	30hp	22kW
Full load current	150 Amp		200 Amp		150 Amp	
Starting current	Varies		Varies		Varies	
Frequency drive	74 hp	55kW	120 hp	90kW	100 hp	75kW
Brake Voltage	220VDC		220VDC		220VDC	
WEIGHTS						
Gross per car	9,500 lbs	4,300 kg	9,500 lbs	4,300 kg	9,500 lbs	4,300 kg
Mast (650x650x8)	550 lbs	250 kg	550 lbs	250 kg	550 lbs	250 kg
Traveling cable	4 lb/ft	6 kg/m	4 lb/ft	6 kg/m	4 lb/ft	6 kg/m
Tie-in	10% of total mast		10% of total mast		10% of total mast	

AVR600 6000 lb Capacity Man & Material Hoist

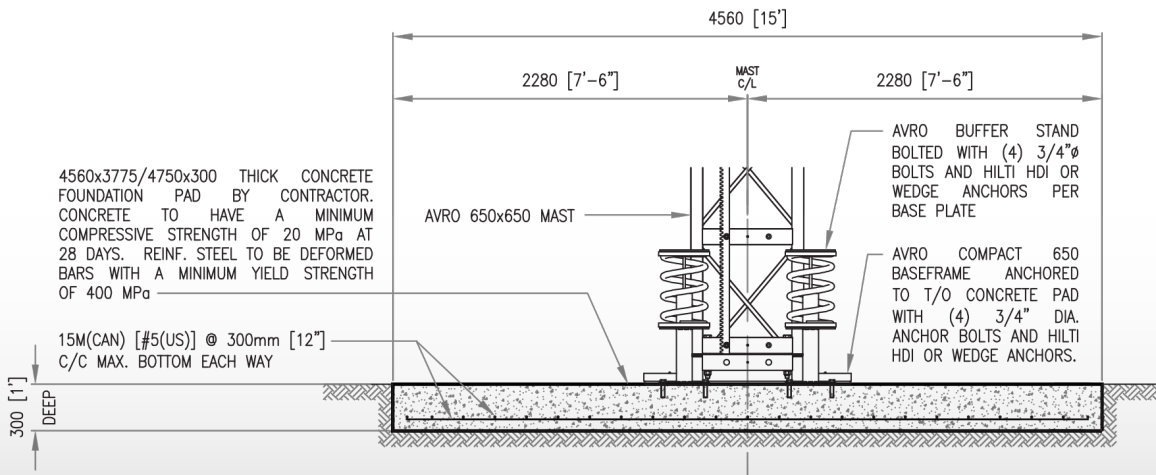
AVRO 650X650 MAST



AVRO AVR600 SINGLE CAGE CONFIGURATION WITH 650x650 MAST

AVRO AVR600 DUAL CAGE CONFIGURATION WITH 650x650 MAST

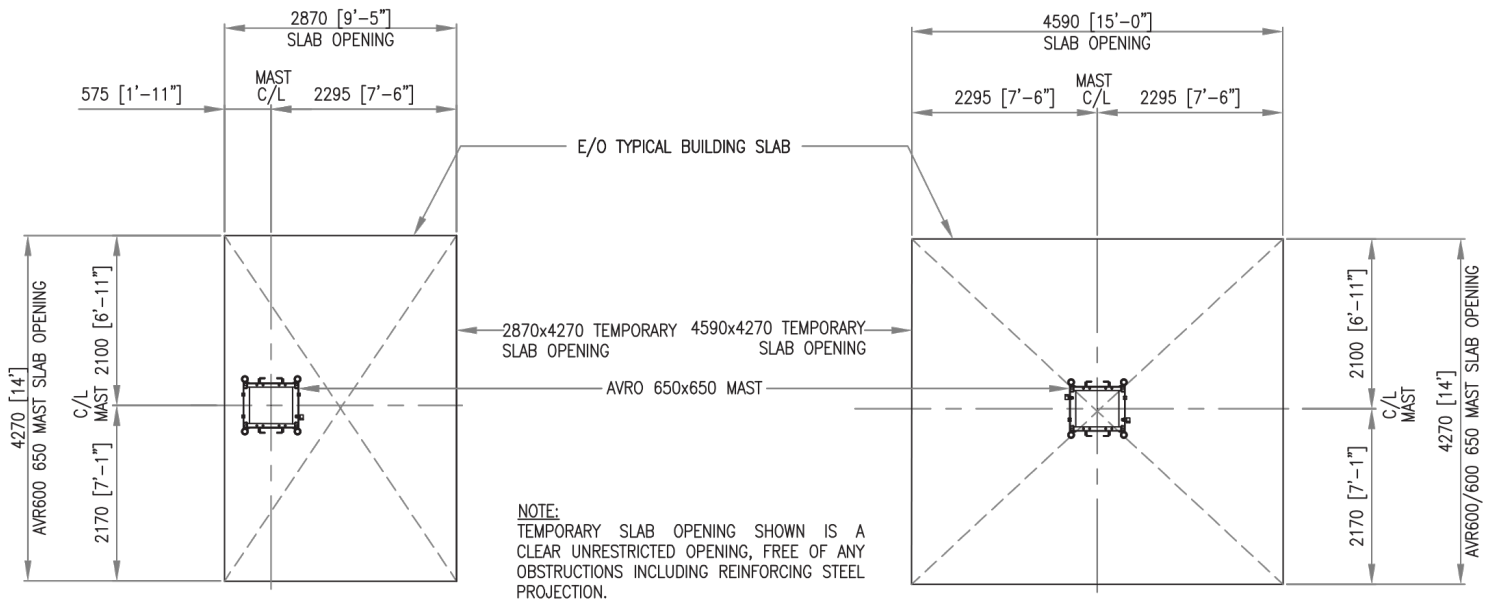
FOUNDATION PAD PLAN LAYOUT



NOTE:
ALL HOIST CAGES ARE DESIGNED AND BUILT IN CONFORMANCE WITH CAN/CSA-Z185-M87 LOCAL SAFETY CODE.
ALL SIZES AND DIMENSION ARE SUBJECT TO CHANGE AT ANY TIME WITHOUT NOTICE AND MUST BE VERIFIED BY LOCAL CERTIFIED ENGINEER.
ANY CHANGES OR MODIFICATION SHOULD BE CONSULTED WITH AVRO HOIST COMPANY.
ALL TIE-IN ANCHOR SPECIFICATION AND/OR EXISTING STRUCTURE REINFORCING TO BE DESIGNED AND APPROVED AS PER LOCAL SAFETY STANDARDS AND REGULATION BY LOCAL CERTIFIED ENGINEER PRIOR TO ANY WORK COMMENCING.

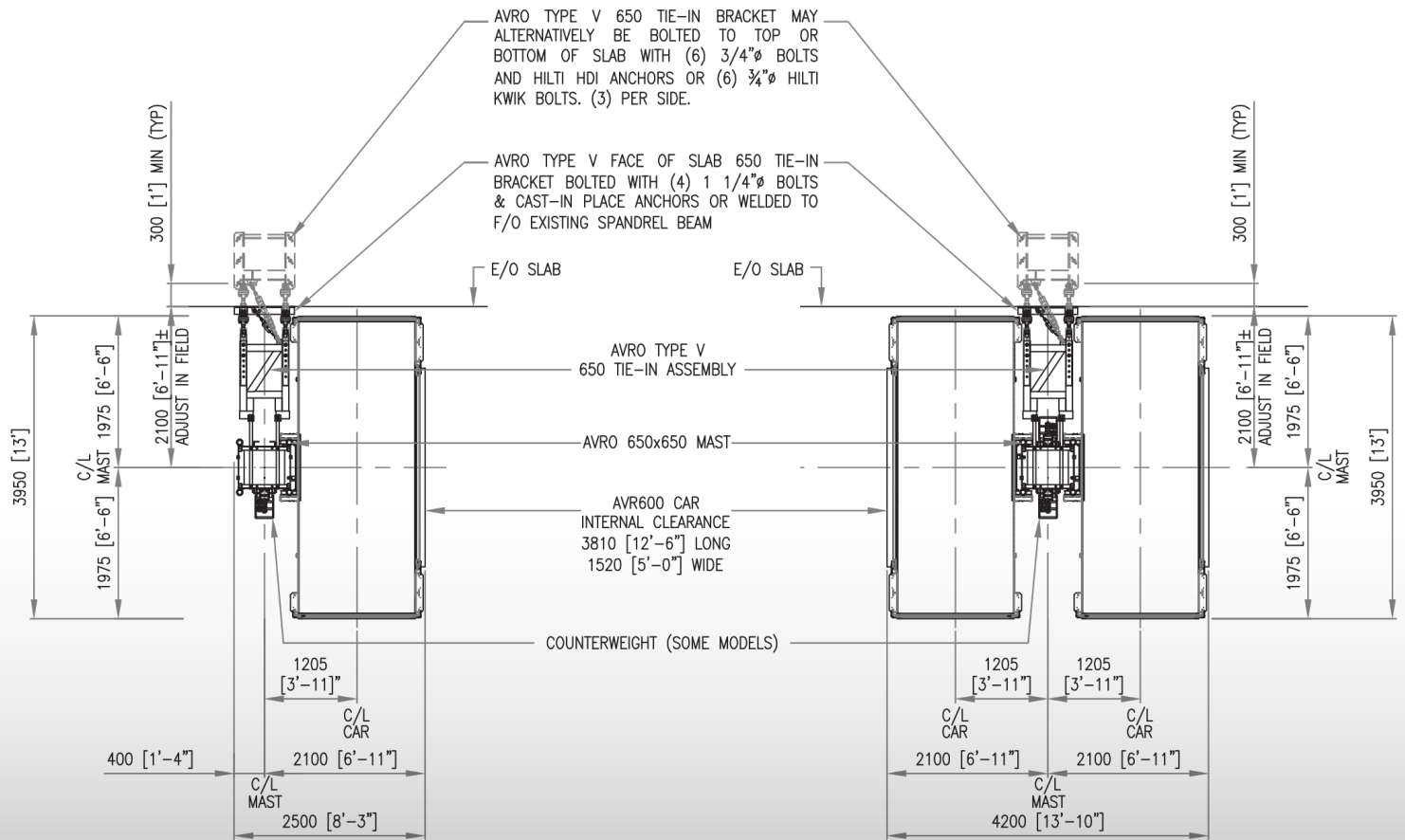
NOTE:
SOIL ENGINEER FOR THE PROJECT TO ENSURE THAT SOIL UNDER HOIST PAD IS CAPABLE OF SUPPORTING A CAPACITY OF 3,000PSF.

FOUNDATION PAD SECTION X-X



SINGLE CAGE SLAB OPENING PLAN LAYOUT
WITH 650x650 MAST

DUAL CAGE SLAB OPENING PLAN LAYOUT
WITH 650x650 MAST

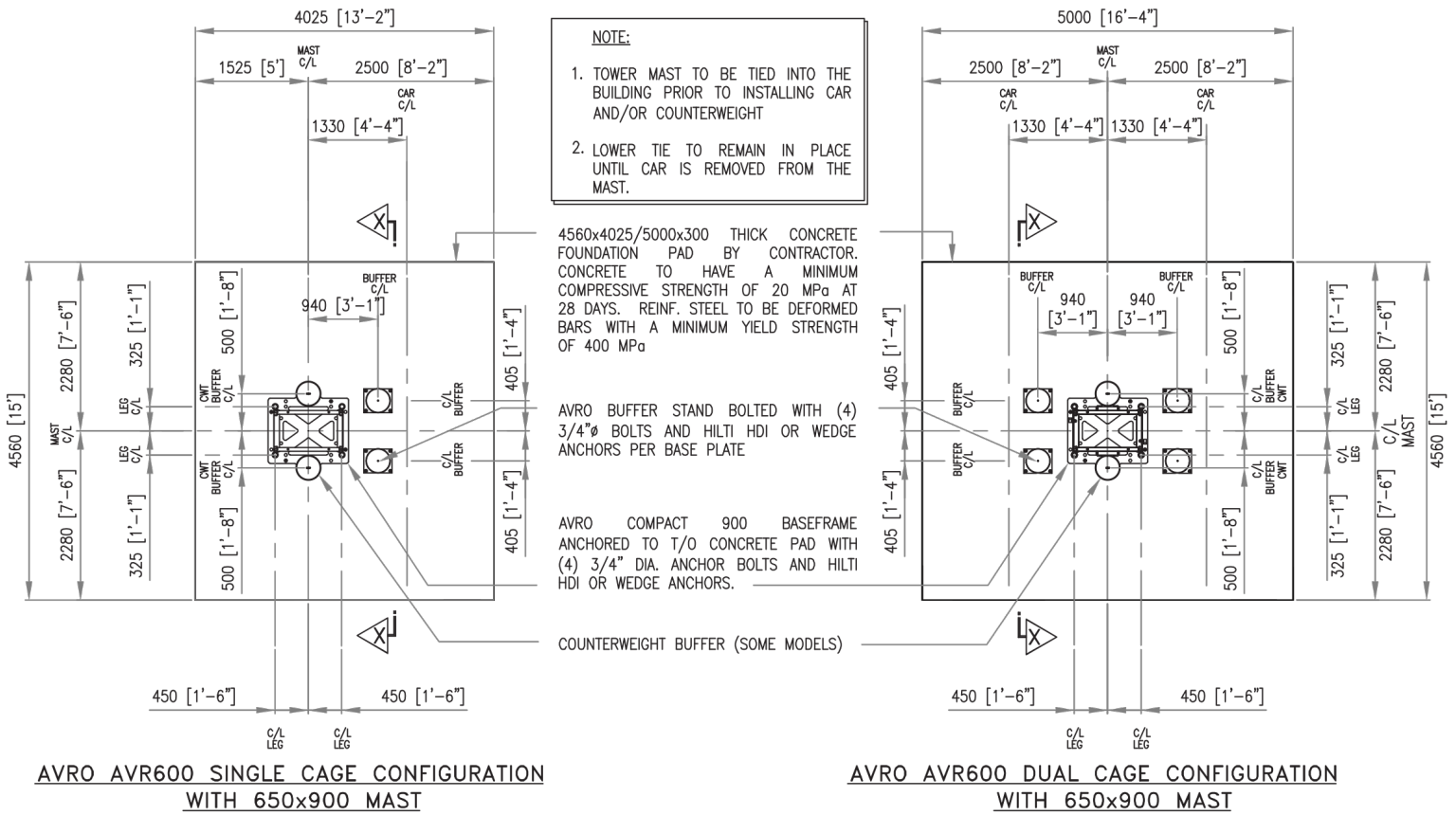


AVRO AVR600 SINGLE CAGE
TYPICAL TYPE V TIE-IN DETAIL PLAN LAYOUT
WITH 650x650 MAST

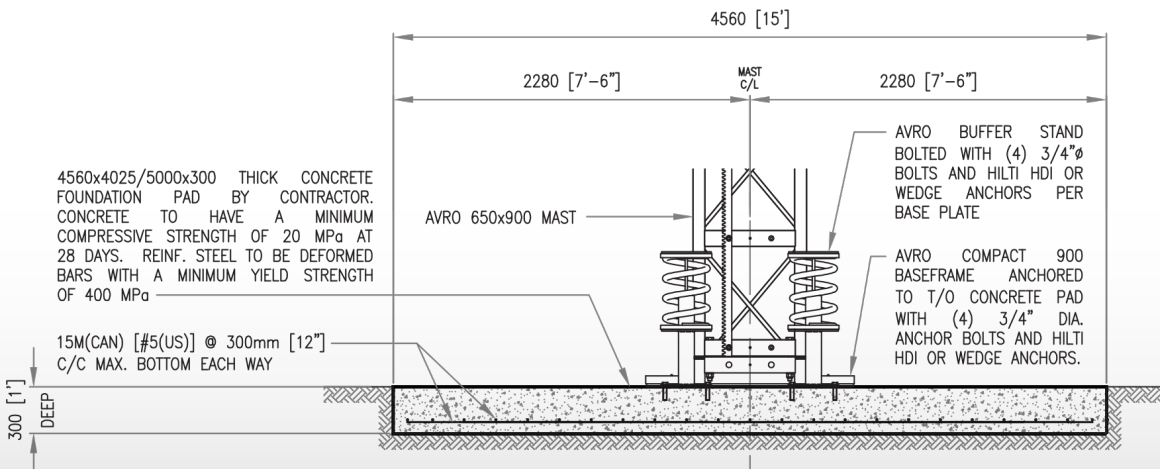
AVRO AVR600 DUAL CAGE
TYPICAL TYPE V TIE-IN DETAIL PLAN LAYOUT
WITH 650x650 MAST

AVR600 6000 lb Capacity Man & Material Hoist

AVRO 650X900 MAST



FOUNDATION PAD PLAN LAYOUT



NOTE:

ALL HOIST CAGES ARE DESIGNED AND BUILT IN CONFORMANCE WITH CAN/CSA-Z185-M87 LOCAL SAFETY CODE.

ALL SIZES AND DIMENSION ARE SUBJECT TO CHANGE AT ANY TIME WITHOUT NOTICE AND MUST BE VERIFIED BY LOCAL CERTIFIED ENGINEER.

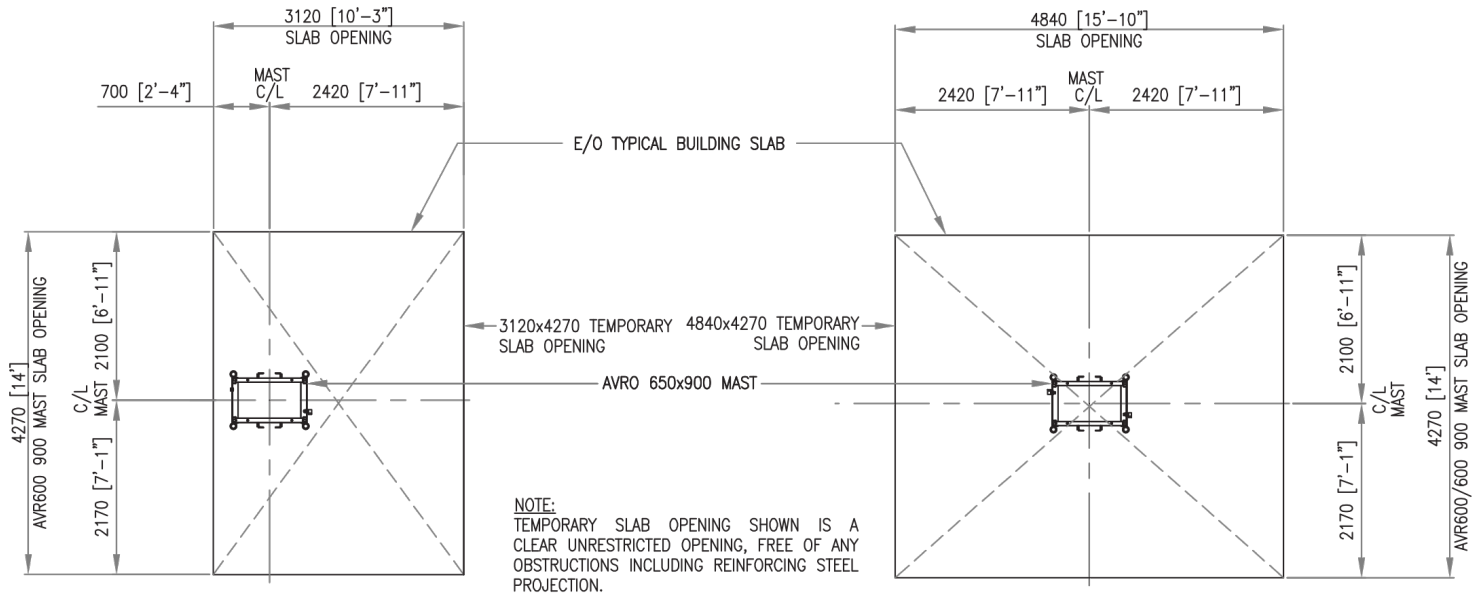
ANY CHANGES OR MODIFICATION SHOULD BE CONSULTED WITH AVRO HOIST COMPANY.

ALL TIE-IN ANCHOR SPECIFICATION AND/OR EXISTING STRUCTURE REINFORCING TO BE DESIGNED AND APPROVED AS PER LOCAL SAFETY STANDARDS AND REGULATION BY LOCAL CERTIFIED ENGINEER PRIOR TO ANY WORK COMMENCING.

FOUNDATION PAD SECTION X-X

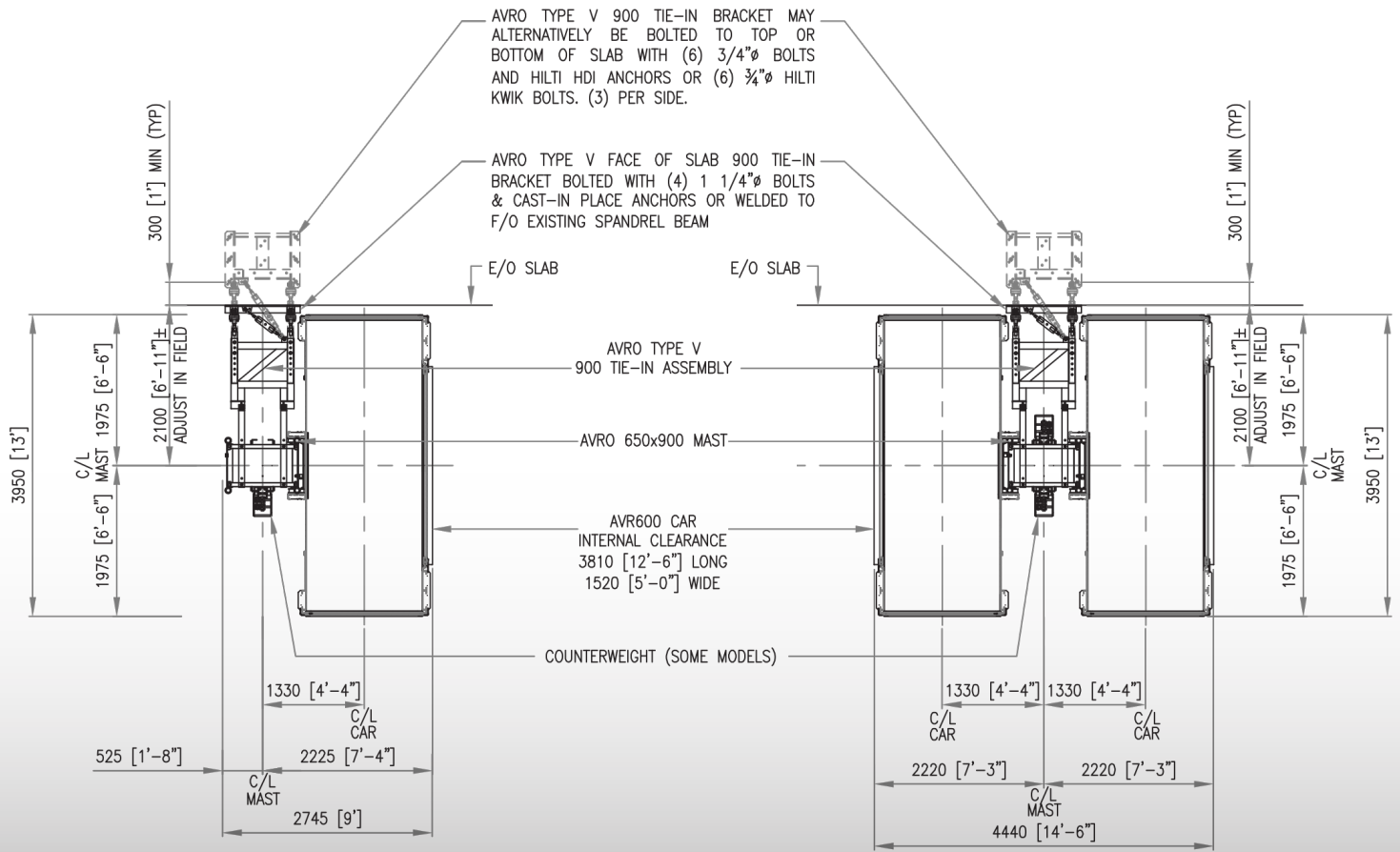
NOTE:

SOIL ENGINEER FOR THE PROJECT TO ENSURE THAT SOIL UNDER HOIST PAD IS CAPABLE OF SUPPORTING A CAPACITY OF 3,000PSF.



SINGLE CAGE SLAB OPENING PLAN LAYOUT
WITH 650x900 MAST

DUAL CAGE SLAB OPENING PLAN LAYOUT
WITH 650x900 MAST

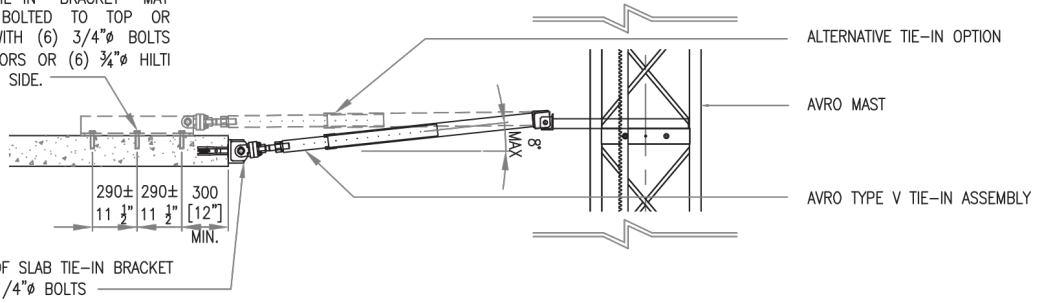


AVRO AVR600 SINGLE CAGE
TYPICAL TYPE V TIE-IN DETAIL PLAN LAYOUT
WITH 650x900 MAST

AVRO AVR600 DUAL CAGE
TYPICAL TYPE V TIE-IN DETAIL PLAN LAYOUT
WITH 650x900 MAST

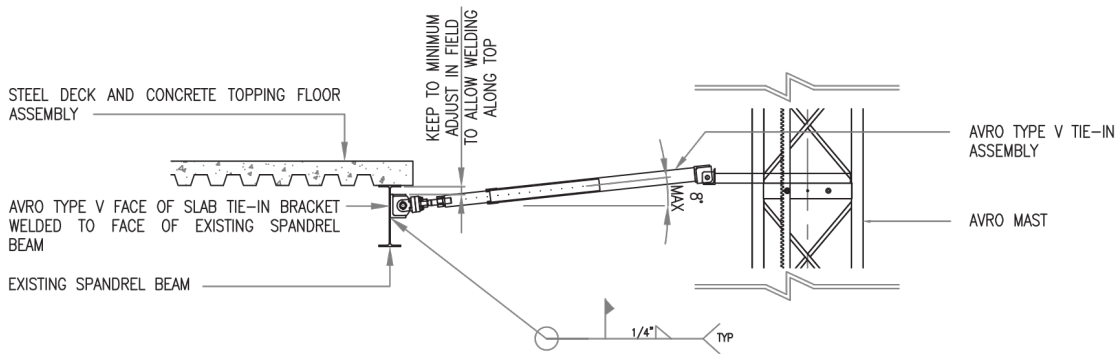
AVR600 6000 lb Capacity Man & Material Hoist

AVRO TYPE V TIE-IN BRACKET MAY ALTERNATIVELY BE BOLTED TO TOP OR BOTTOM OF SLAB WITH (6) 3/4"Ø BOLTS AND HILTI HDI ANCHORS OR (6) 3/4"Ø HILTI KWIK BOLTS. (3) PER SIDE.



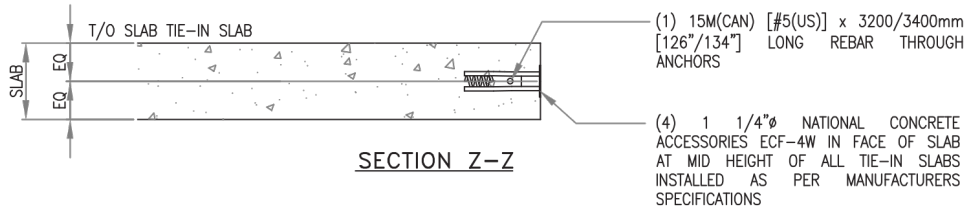
AVRO TYPE V FACE OF SLAB TIE-IN BRACKET BOLTED WITH (4) 1 1/4"Ø BOLTS

TYPICAL AVRO TYPE V TIE-IN DETAIL SECTION INTO CONCRETE FLOOR SLAB ASSEMBLY

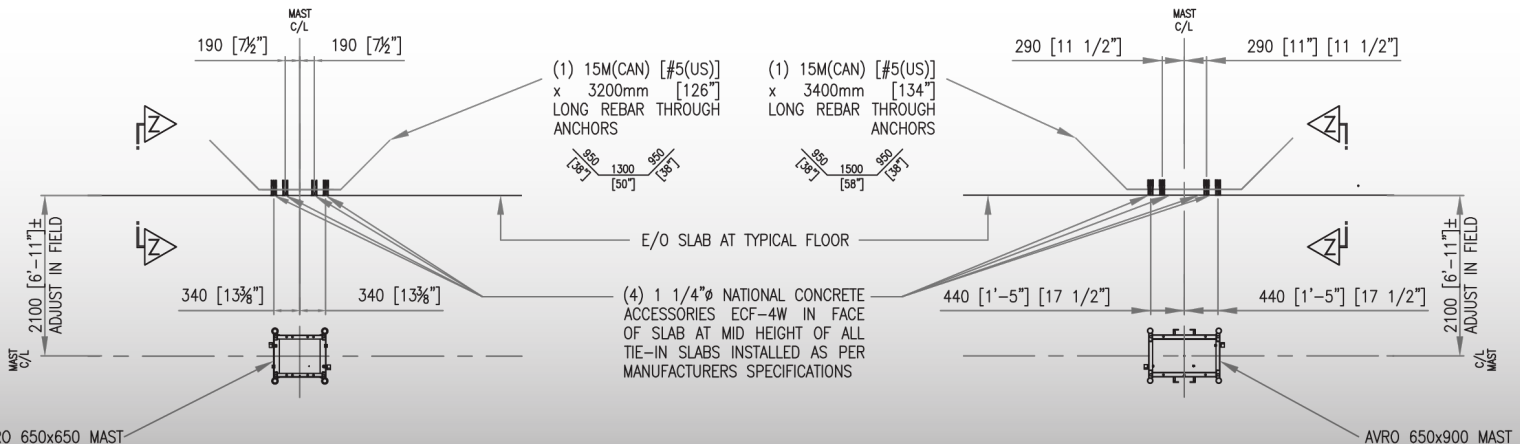


TYPICAL AVRO TYPE V TIE-IN DETAIL SECTION INTO STEEL DECK & CONCRETE FLOOR ASSEMBLY

NOTE:
STRUCTURAL ENGINEER FOR THE PROJECT IS TO DETERMINE THE REQUIREMENTS FOR ADDITIONAL FRAMING REINFORCEMENT TO SUPPORT THE LOADS TRANSFERRED TO STRUCTURE FROM HOIST.



SECTION Z-Z



AVRO TYPE V 650 MAST CAST-IN PLACE ANCHOR LAYOUT

AVRO TYPE V 900 MAST CAST-IN PLACE ANCHOR LAYOUT

AVR600

AVR600



CONTACT

Tel: (905) 362-3740

Fax: (905) 362-3744

info@avrohoist.com



ADDRESS

6240 Danville Road
Mississauga, ON, L5T 2H7